



**42ME SERIES
CHILLED WATER FAN COIL UNITS FOR
CHILLER [STANDARD ΔT] AND DISTRICT
COOLING APPLICATION
(200 to 3000 CFM)**



**LOW STATIC DUCTED
FAN COIL UNITS**



**HIGH STATIC DUCTED
FAN COIL UNITS**



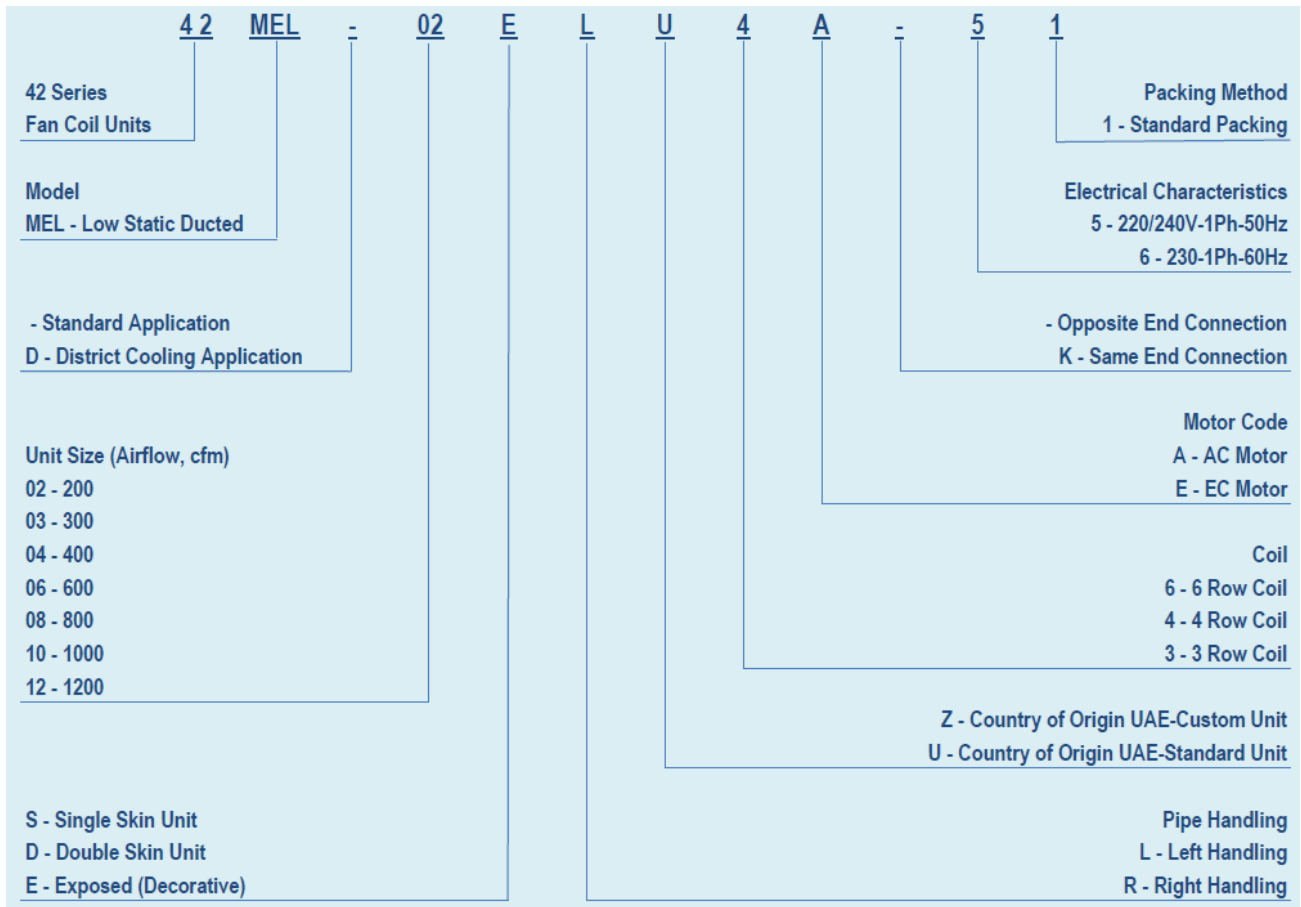
**DECORATIVE CEILING SUSPENDED
FAN COIL UNITS**

TABLE OF CONTENTS

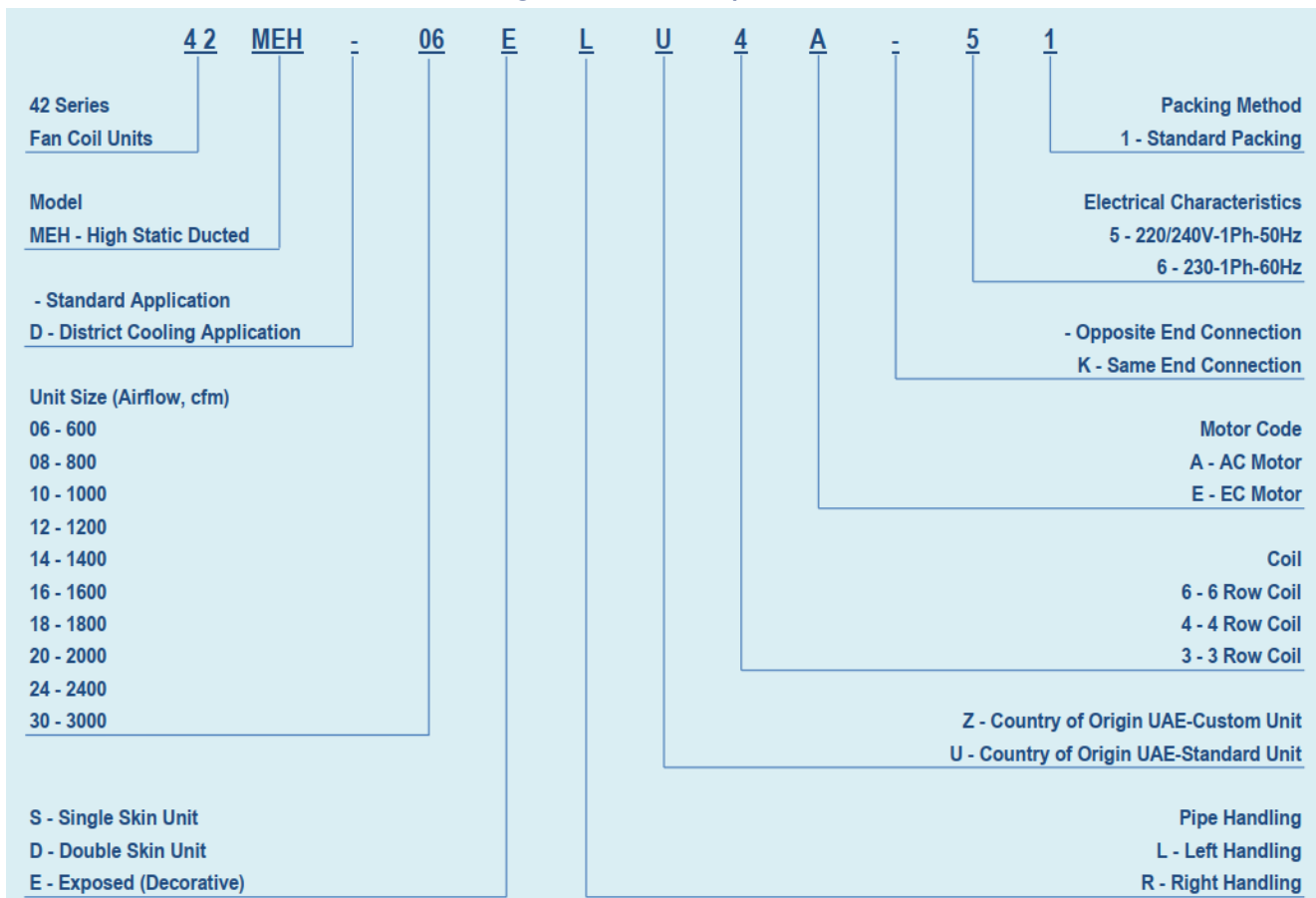
	<u>Page</u>
MODEL NUMBER NOMENCLATURE	3
INTRODUCTION	4
TECHNICAL DATA	5-16
MEL	5-7
MELD	8-10
MEH	11-13
MEHD	14-16
UNIT DIMENSIONS	17-28
MEL	17-19
MELD	20-22
MEH	23-25
MEHD	26-28
PERFORMANCE RATING	29-34
MEL	29-30
MELD	30-31
MEH	32-33
MEHD	33-34
ELECTRICAL DATA	35-37
MEL	35
MELD	35
MEH	36
MEHD	37
EC MOTOR	38
WIRING DIAGRAM	39-45
MEL & MELD	39
MEH & MEHD	40
MEL & MELD – EC MOTOR	40-42
MEH & MEHD – EC MOTOR	43-45
GUIDE SPECIFICATIONS	46-47

MODEL NUMBER NOMENCLATURE

MODEL: 42 MEL / MELD



MODEL: 42 MEH / MEHD



INTRODUCTION

Carrier fan coil units are the ideal solution for providing localized air conditioning to ensure comfortable temperatures in spaces of any size. The unit consists of a fan which passes air over a heating and cooling coil to condition the temperature of the space it serves.

Carrier fan coil unit's coil is supplied by the building's low pressure hot water & chilled water systems meaning that it can be installed anywhere where a water & electrical supply is available. The simple nature of the product's operation makes for easy and cost effective installation in new build or refurbished offices, schools, hotels, houses & apartments.

Carrier fan coil units are ideally suited for installation in chilled water or hot water applications to meet air conditioning requirements of individual rooms. Units are designed to address the need for greater reliability, guaranteed performance, quieter operation, low installation height and better indoor air quality.

Carrier fan coil units are easily installed and serviced. Fan coil units feature high operating

efficiency, low operating cost and quiet, energy efficient fan motors.

The main components of fan coil units are:

- Fan,
- Coil (Heat exchanger).
- Air Filter

The heat exchanger receives hot or cold water from a heating or cooling source. The fan spreads the heat or coolness in order to condition the space.

Features

- Cleaner, quieter and more efficient in design.
- Heavy gauge galvanized casing & fan housing
- Hi-efficiency forward curved fan for quiet operation.
- Hi-efficiency, low power consumption electric motor.
- Insulated heavy gauge drain pan.
- Quick electrical connections.
- Manual air vent on coil header**.
- Interchangeable control box location at sites**.
- Additional mounting holes for maintenance**.

*** Features are not applicable for Decorative ceiling type fan coil units.*

COMPUTER SELECTION (FCU Genius)

We have made available a computer program (FCU Genius) to finalize your selections. Please contact manufacturer's representative for a computer selection based on your "FCU Genius" the design parameters of your application.

Quality Assurance

Carrier fan coil units are tested in accordance with Eurovent standard. Each coil is factory tested for leakage at 350 psig air pressure with coil submerged in water. Factory is ISO-9001 certified.



[Carrier Eurovent-Certification web-link](#)

The information herein provides guidance on how the product should be selected, installed, operated and maintained. Qualified and Professional personnel should be used in all instances to determine exact methods of working using these instructions as a guide to good practice.

TECHNICAL DATA

42MEL SERIES LOW STATIC WITH PLENUM - STANDARD ΔT

DUCTED

PERFORMANCE			MEL-02S	MEL-03S	MEL-04S	MEL-06S	MEL-08S	MEL-10S	MEL-12S
			LOW STATIC , NORMAL COOLING UNIT						
Nominal Air Volume	High	CFM	207	420	480	720	960	1200	1344
		L/S	98	198	227	340	453	567	635
Cooling Capacity (Fluid)*		KW	1.50	2.59	3.42	5.50	5.58	8.43	10.31
		BTU/HR	5119	8840	11672	18771	19044	28771	35188
Motor Nominal Power Output		W	50	80	80	80	130	160	160
Motor Current		AMP	Refer Page 35						
Sound Pressure	High	dB (A)	44	44	46	51	52	53	53
	Med		42	42	43	45	45	47	48
	Low		37	37	38	39	39	41	43
Water Flow		L/S	0.064	0.110	0.146	0.234	0.238	0.359	0.439
Water Pressure Drop		KPA	2.9	6.2	11.6	19.4	6.1	15.0	24.0
Fan Type		Centrifugal Forward-Curved Blades							
Motor Type		Permanent Split Capacitor							
Coil	Rows	NOS.	4						
	Face Area	SQ. FT	1.09	1.31	1.53	2.03	2.62	3.06	3.50
	Coil Water Volume	M ³	0.00113	0.00136	0.00159	0.00211	0.00272	0.00317	0.00363
	Working Pressure	MPa	1.72						
Connections	In-Out (Thread) / Material		1/2" NPS / Copper				3/4" NPS / Copper		
	Condensate Drain / Material		3/4" NPT / GI Steel , Externally Threaded						
Cabinet Size	Height	MM	250 +/- 5						
	Width	MM	550 +/- 5						
	Length	MM	790	890	990	1240	1490	1690	1890
Casing Material / Thickness		Galvanized Steel / up to 1.0 MM							
Casing Treatment / External Finish		Non-painted , Z275 (G90) Zinc Coating							
Net Weight		KG	18	20	23	28	36	41	45

Note:
 * Based on motor at high speed, standard air and dry coil operation; 5.6°C water temperature rise; entering air temperature 24.4°C DB;17.2°C WB; entering water temperature 7.2°C.

Electronically Commutated Motor (ECM) is available for all sizes - Optional.



Controller (Optional)

-- For other design conditions, please apply the selection program to finalize your applications --

TECHNICAL DATA

42MEL SERIES LOW STATIC WITH PLENUM - STANDARD ΔT

DUCTED-DOUBLE SKIN

PERFORMANCE			MEL-02D	MEL-03D	MEL-04D	MEL-06D	MEL-08D	MEL-10D	MEL-12D
			LOW STATIC , NORMAL COOLING UNIT						
Nominal Air Volume	High	CFM	207	420	480	720	960	1200	1344
		L/S	98	198	227	340	453	567	635
Cooling Capacity (Fluid)*		KW	1.50	2.59	3.42	5.50	5.58	8.43	10.31
		BTU/HR	5119	8840	11672	18771	19044	28771	35188
Motor Nominal Power Output		W	50	80	80	80	130	160	160
Motor Current		AMP	Refer Page 35						
Sound Pressure	High	dB (A)	44	44	46	51	52	53	53
	Med		42	42	43	45	45	47	48
	Low		37	37	38	39	39	41	43
Water Flow		L/S	0.064	0.110	0.146	0.234	0.238	0.359	0.439
Water Pressure Drop		KPA	2.9	6.2	11.6	19.4	6.1	15.0	24.0
Fan Type		Centrifugal Forward-Curved Blades							
Motor Type		Permanent Split Capacitor							
Coil	Rows	NOS.	4						
	Face Area	SQ. FT	1.09	1.31	1.53	2.03	2.62	3.06	3.50
	Coil Water Volume	M ³	0.00113	0.00136	0.00159	0.00211	0.00272	0.00317	0.00363
	Working Pressure	MPa	1.72						
Connections	In-Out (Thread) / Material		1/2" NPS / Copper				3/4" NPS / Copper		
	Condensate Drain / Material		3/4" NPT / GI Steel , Externally Threaded						
Cabinet Size	Height	MM	275 +/- 5						
	Width	MM	550 +/- 5						
	Length	MM	790	890	990	1240	1490	1690	1890
Casing Material / Thickness		Galvanized Steel / up to 1.0 MM							
Casing Treatment / External Finish		Non-painted , Z275 (G90) Zinc Coating							
Net Weight		KG	23	26	29	35	45	51	56

Note:
 * Based on motor at high speed, standard air and dry coil operation; 5.6°C water temperature rise; entering air temperature 24.4°C DB;17.2°C WB; entering water temperature 7.2°C.

Electronically Commutated Motor (ECM) is available for all sizes - Optional.



Controller (Optional)

- - For other design conditions, please apply the selection program to finalize your applications - -

TECHNICAL DATA

42MEL SERIES WITH CABINET - STANDARD ΔT

EXPOSED DECORATIVE

PERFORMANCE			MEL-02E	MEL-03E	MEL-04E	MEL-06E	MEL-08E	MEL-10E	MEL-12E
			NORMAL COOLING UNIT						
Nominal Air Volume	High	CFM	207	420	480	720	960	1200	1344
		L/S	98	198	227	340	453	567	635
Cooling Capacity (Fluid)*		KW	1.50	2.59	3.42	5.50	5.58	8.43	10.31
		BTU/HR	5119	8840	11672	18771	19044	28771	35188
Motor Nominal Power Output		W	50	80	80	80	130	160	160
Motor Current		AMP	Refer Page 35						
Sound Pressure	High	dB (A)	44	44	46	51	52	53	53
	Med		42	42	43	45	45	47	48
	Low		37	37	38	39	39	41	43
Water Flow		L/S	0.064	0.110	0.146	0.234	0.238	0.359	0.439
Water Pressure Drop		KPA	2.9	6.2	11.6	19.4	6.1	15.0	24.0
Fan Type		Centrifugal Forward-Curved Blades							
Motor Type		Permanent Split Capacitor							
Coil	Rows	NOS.	4						
	Face Area	SQ. FT	1.09	1.31	1.53	2.03	2.62	3.06	3.50
	Coil Water Volume	M ³	0.00113	0.00136	0.00159	0.00211	0.00272	0.00317	0.00363
	Working Pressure	MPa	1.72						
Connections	In-Out (Thread) / Material		1/2" NPS / Copper				3/4" NPS / Copper		
	Condensate Drain / Material		3/4" NPT / GI Steel , Externally Threaded						
Cabinet Size	Height	MM	250 +/- 5						
	Width	MM	530 +/- 5						
	Length	MM	732	832	932	1162	1432	1632	1832
Casing Material / Thickness		Galvanized Steel / up to 1.2 MM							
Casing Treatment / External Finish		Z275 (G90) Zinc Coating, polyester powder coated (RAL9002)							
Net Weight		KG	24	27	30	37	46	53	58

Note:
 * Based on motor at high speed, standard air and dry coil operation; 5.6°C water temperature rise; entering air temperature 24.4°C DB; 17.2°C WB; entering water temperature 7.2°C.

Electronically Commutated Motor (ECM) is available for all sizes - Optional.



Controller (Optional)

- - For other design conditions, please apply the selection program to finalize your applications - -

TECHNICAL DATA

42MELD SERIES LOW STATIC WITH PLENUM – DISTRICT COOLING HIGH ΔT

DUCTED

PERFORMANCE			MELD02S	MELD03S	MELD04S	MELD06S	MELD08S	MELD10S	MELD12S
			LOW STATIC , DISTRICT COOLING UNIT						
Nominal Air Volume	High	CFM	207	420	480	720	960	1200	1344
		L/S	98	198	227	340	453	567	635
Cooling Capacity (Fluid)*		KW	1.55	2.78	3.41	6.02	7.81	9.68	10.40
		BTU/HR	5290	9488	11638	20546	26655	33038	35495
Motor Nominal Power Output		W	50	80	80	80	130	160	160
Motor Current		AMP	Refer Page 35						
Sound Pressure	High	dB (A)	44	44	46	51	52	53	53
	Med		42	42	43	45	45	47	48
	Low		37	37	38	39	39	41	43
Water Flow		L/S	0.042	0.075	0.091	0.161	0.209	0.259	0.279
Water Pressure Drop		KPA	5.60	8.20	11.40	40.50	36.30	31.90	21.60
Fan Type		Centrifugal Forward-Curved Blades							
Motor Type		Permanent Split Capacitor							
Coil	Rows	NOS.	4						
	Face Area	SQ. FT	1.09	1.31	1.53	2.03	2.62	3.06	3.50
	Coil Water Volume	M ³	0.00113	0.00136	0.00159	0.00211	0.00272	0.00317	0.00363
	Working Pressure	MPa	1.72						
Connections	In-Out (Thread) / Material		1/2" NPS / Copper				3/4" NPS / Copper		
	Condensate Drain / Material		3/4" NPT / GI Steel , Externally Threaded						
Cabinet Size	Height	MM	250 +/- 5						
	Width	MM	550 +/- 5						
	Length	MM	790	890	990	1240	1490	1690	1890
Casing Material / Thickness		Galvanized Steel / up to 1.0 MM							
Casing Treatment / External Finish		Non-painted , Z275 (G90) Zinc Coating							
Net Weight		KG	18	20	23	28	36	41	45

Note:
 * Based on motor at high speed, standard air and dry coil operation; 8.9°C water temperature rise; entering air temperature 24.4°C DB; 17.2°C WB; entering water temperature 5.5°C.

Electronically Commutated Motor (ECM) is available for all sizes - Optional.



Controller (Optional)

- - For other design conditions, please apply the selection program to finalize your applications - -

TECHNICAL DATA

42MELD SERIES LOW STATIC WITH PLENUM – DISTRICT COOLING HIGH ΔT

DUCTED-DOUBLE SKIN

PERFORMANCE			MELD02D	MELD03D	MELD04D	MELD06D	MELD08D	MELD10D	MELD12D
			LOW STATIC , DISTRICT COOLING UNIT						
Nominal Air Volume	High	CFM	207	420	480	720	960	1200	1344
		L/S	98	198	227	340	453	567	635
Cooling Capacity (Fluid)*		KW	1.55	2.78	3.41	6.02	7.81	9.68	10.40
		BTU/HR	5290	9488	11638	20546	26655	33038	35495
Motor Nominal Power Output		W	50	80	80	80	130	160	160
Motor Current		AMP	Refer Page 35						
Sound Pressure	High	dB (A)	44	44	46	51	52	53	53
	Med		42	42	43	45	45	47	48
	Low		37	37	38	39	39	41	43
Water Flow		L/S	0.042	0.075	0.091	0.161	0.209	0.259	0.279
Water Pressure Drop		KPA	5.60	8.20	11.40	40.50	36.30	31.90	21.60
Fan Type		Centrifugal Forward-Curved Blades							
Motor Type		Permanent Split Capacitor							
Coil	Rows	NOS.	4						
	Face Area	SQ. FT	1.09	1.31	1.53	2.03	2.62	3.06	3.50
	Coil Water Volume	M ³	0.00113	0.00136	0.00159	0.00211	0.00272	0.00317	0.00363
	Working Pressure	MPa	1.72						
Connections	In-Out (Thread) / Material		1/2" NPS / Copper				3/4" NPS / Copper		
	Condensate Drain / Material		3/4" NPT / GI Steel , Externally Threaded						
Cabinet Size	Height	MM	275 +/- 5						
	Width	MM	550 +/- 5						
	Length	MM	790	890	990	1240	1490	1690	1890
Casing Material / Thickness		Galvanized Steel / up to 1.0 MM							
Casing Treatment / External Finish		Non-painted , Z275 (G90) Zinc Coating							
Net Weight		KG	23	26	29	35	45	51	56

Note:
 * Based on motor at high speed, standard air and dry coil operation; 8.9°C water temperature rise; entering air temperature 24.4°C DB;17.2°C WB; entering water temperature 5.5°C.

Electronically Commutated Motor (ECM) is available for all sizes - Optional.



Controller (Optional)

- - For other design conditions, please apply the selection program to finalize your applications - -

TECHNICAL DATA

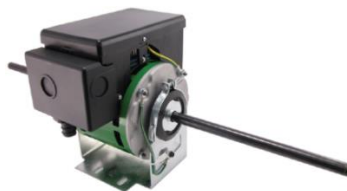
42MELD SERIES WITH CABINET – DISTRICT COOLING HIGH ΔT

EXPOSED DECORATIVE

PERFORMANCE			MELD02E	MELD03E	MELD04E	MELD06E	MELD08E	MELD10E	MELD12E
			DISTRICT COOLING UNIT						
Nominal Air Volume	High	CFM	207	420	480	720	960	1200	1344
		L/S	98	198	227	340	453	567	635
Cooling Capacity (Fluid)*		KW	1.55	2.78	3.41	6.02	7.81	9.68	10.40
		BTU/HR	5290	9488	11638	20546	26655	33038	35495
Motor Nominal Power Output		W	50	80	80	80	130	160	160
Motor Current		AMP	Refer Page 35						
Sound Pressure	High	dB (A)	44	44	46	51	52	53	53
	Med		42	42	43	45	45	47	48
	Low		37	37	38	39	39	41	43
Water Flow		L/S	0.042	0.075	0.091	0.161	0.209	0.259	0.279
Water Pressure Drop		KPA	5.60	8.20	11.40	40.50	36.30	31.90	21.60
Fan Type		Centrifugal Forward-Curved Blades							
Motor Type		Permanent Split Capacitor							
Coil	Rows	NOS.	4						
	Face Area	SQ. FT	1.09	1.31	1.53	2.03	2.62	3.06	3.50
	Coil Water Volume	M ³	0.00113	0.00136	0.00159	0.00211	0.00272	0.00317	0.00363
	Working Pressure	MPa	1.72						
Connections	In-Out (Thread) / Material		1/2" NPS / Copper				3/4" NPS / Copper		
	Condensate Drain / Material		3/4" NPT / GI Steel , Externally Threaded						
Cabinet Size	Height	MM	250 +/- 5						
	Width	MM	530 +/- 5						
	Length	MM	732	832	932	1162	1432	1632	1832
Casing Material / Thickness		Galvanized Steel / up to 1.2 MM							
Casing Treatment / External Finish		Z275 (G90) Zinc Coating, polyester powder coated (RAL9002)							
Net Weight		KG	24	27	30	37	46	53	58

Note:
 * Based on motor at high speed, standard air and dry coil operation; 8.9°C water temperature rise; entering air temperature 24.4°C DB; 17.2°C WB; entering water temperature 5.5°C.

Electronically Commutated Motor (ECM) is available for all sizes - Optional.



Controller (Optional)

- - For other design conditions, please apply the selection program to finalize your applications - -

TECHNICAL DATA

42MEH SERIES HIGH STATIC WITH PLENUM - STANDARD ΔT

DUCTED

PERFORMANCE			MEH-06S	MEH-08S	MEH-10S	MEH-12S	MEH-14S	MEH-16S	MEH-18S	MEH-20S	MEH-24S	MEH-30S
			HIGH STATIC NORMAL COOLING UNIT									
Nominal Air Volume	High	CFM	641	800	1000	1139	1399	1669	1799	1990	2378	3200
		L/S	303	378	472	538	661	788	849	940	1123	1511
Cooling Capacity (Fluid)*		KW	3.65	5.17	6.28	7.30	9.19	10.49	11.88	14.16	16.34	20.52
		BTU/HR	12457	17645	21433	24915	31365	35802	40546	48328	55768	70034
Motor Nominal Power Output		W	100	150	200	250	300	300	400	500	500	750
Motor Current		AMP	Refer Page 36									
Sound Pressure	High	dB (A)	48	53	54	54	55	56	56	58	58	58
	Med		46	51	53	53	54	54	54	57	57	57
	Low		43	48	50	50	49	51	51	52	52	52
Water Flow		L/S	0.155	0.220	0.267	0.311	0.391	0.446	0.506	0.603	0.696	0.874
Water Pressure Drop		KPA	5.40	10.60	7.30	8.10	12.70	6.60	8.70	13.80	18.60	31.50
Fan Type		Centrifugal Forward-Curved Blades										
Motor Type		Permanent Split Capacitor										
Coil	Rows	NOS.	4									
	Face Area	SQ.FT	1.84	2.33	2.66	3.08	3.51	4.07	4.27	4.94	5.52	6.10
	Coil Water Volume	M³	0.00190	0.00241	0.00275	0.00320	0.00364	0.00422	0.00443	0.00512	0.00573	0.00633
	Working Pressure	MPa	1.72									
Connections	In-Out (Thread) / Material		1/2" NPS / Copper	3/4" NPS / Copper			3/4" NPS / Copper			1 1/4" NPS / Copper		
	Condensate Drain / Material		3/4" NPT / GI Steel , Externally Threaded									
Cabinet Size	Height	MM	335 +/- 5									
	Width	MM	630 +/- 5									
	Length	MM	790	890	940	1090	1190	1390	1440	1690	1840	1990
Casing Material / Thickness		Galvanized Steel / up to 1.0 MM										
Casing Treatment / External Finish		Non-painted , Z275 (G90) Zinc Coating										
Net Weight		KG	24	26	29	32	42	45	47	52	58	75

Note:
 * Based on motor at high speed, standard air and dry coil operation; 5.6°C water temperature rise; entering air temperature 24.4°C DB; 17.2°C WB; entering water temperature 7.2°C.

Electronically Commutated Motor (ECM) is available for all sizes - Optional.



Controller (Optional)

-- For other design conditions, please apply the selection program to finalize your applications --

TECHNICAL DATA

42MEH SERIES HIGH STATIC WITH PLENUM - STANDARD ΔT

DUCTED-DOUBLE SKIN

PERFORMANCE			MEH-06D	MEH-08D	MEH-10D	MEH-12D	MEH-14D	MEH-16D	MEH-18D	MEH-20D	MEH-24D	MEH-30D
			HIGH STATIC NORMAL COOLING UNIT									
Nominal Air Volume	High	CFM	641	800	1000	1139	1399	1669	1799	1990	2378	3200
		L/S	303	378	472	538	661	788	849	940	1123	1511
Cooling Capacity (Fluid)*		KW	3.65	5.17	6.28	7.30	9.19	10.49	11.88	14.16	16.34	20.52
		BTU/HR	12457	17645	21433	24915	31365	35802	40546	48328	55768	70034
Motor Nominal Power Output		W	100	150	200	250	300	300	400	500	500	750
Motor Current		AMP	Refer Page 36									
Sound Pressure	High	dB (A)	48	53	54	54	55	56	56	58	58	58
	Med		46	51	53	53	54	54	54	57	57	57
	Low		43	48	50	50	49	51	51	52	52	52
Water Flow		L/S	0.155	0.220	0.267	0.311	0.391	0.446	0.506	0.603	0.696	0.874
Water Pressure Drop		KPA	5.40	10.60	7.30	8.10	12.70	6.60	8.70	13.80	18.60	31.50
Fan Type		Centrifugal Forward-Curved Blades										
Motor Type		Permanent Split Capacitor										
Coil	Rows	NOS.	4									
	Face Area	SQ.FT	1.84	2.33	2.66	3.08	3.51	4.07	4.27	4.94	5.52	6.10
	Coil Water Volume	M ³	0.00190	0.00241	0.00275	0.00320	0.00364	0.00422	0.00443	0.00512	0.00573	0.00633
	Working Pressure	MPa	1.72									
Connections	In-Out (Thread) / Material	1/2" NPS / Copper	3/4" NPS / Copper				3/4" NPS / Copper				1 1/4" NPS / Copper	
	Condensate Drain / Material	3/4" NPT / GI Steel , Externally Threaded										
Cabinet Size	Height	MM	360 +/- 5									
	Width	MM	630 +/- 5									
	Length	MM	790	890	940	1090	1190	1390	1440	1690	1840	1990
Casing Material / Thickness		Galvanized Steel / up to 1.0 MM										
Casing Treatment / External Finish		Non-painted , Z275 (G90) Zinc Coating										
Net Weight		KG	29	32	35	39	50	54	56	62	69	87

Note:
 * Based on motor at high speed, standard air and dry coil operation; 5.6°C water temperature rise; entering air temperature 24.4°C DB; 17.2°C WB; entering water temperature 7.2°C.

Electronically Commutated Motor (ECM) is available for all sizes - Optional.



Controller (Optional)

-- For other design conditions, please apply the selection program to finalize your applications --

TECHNICAL DATA

42MEH SERIES WITH CABINET - STANDARD ΔT

EXPOSED DECORATIVE

PERFORMANCE			MEH-06E	MEH-08E	MEH-10E	MEH-12E	MEH-14E	MEH-16E	MEH-18E	MEH-20E	MEH-24E	MEH-30E
			NORMAL COOLING UNIT									
Nominal Air Volume	High	CFM	641	800	1000	1139	1399	1669	1799	1990	2378	3200
		L/S	303	378	472	538	661	788	849	940	1123	1511
Cooling Capacity (Fluid)*		KW	3.65	5.17	6.28	7.30	9.19	10.49	11.88	14.16	16.34	20.52
		BTU/HR	12457	17645	21433	24915	31365	35802	40546	48328	55768	70034
Motor Nominal Power Output		W	100	150	200	250	300	300	400	500	500	750
Motor Current		AMP	Refer Page 36									
Sound Pressure	High	dB (A)	48	53	54	54	55	56	56	58	58	58
	Med		46	51	53	53	54	54	54	57	57	57
	Low		43	48	50	50	49	51	51	52	52	52
Water Flow		L/S	0.155	0.220	0.267	0.311	0.391	0.446	0.506	0.603	0.696	0.874
Water Pressure Drop		KPA	5.40	10.60	7.30	8.10	12.70	6.60	8.70	13.80	18.60	31.50
Fan Type		Centrifugal Forward-Curved Blades										
Motor Type		Permanent Split Capacitor										
Coil	Rows	NOS.	4									
	Face Area	SQ.FT	1.84	2.33	2.66	3.08	3.51	4.07	4.27	4.94	5.52	6.10
	Coil Water Volume	M ³	0.00190	0.00241	0.00275	0.00320	0.00364	0.00422	0.00443	0.00512	0.00573	0.00633
	Working Pressure	MPa	1.72									
Connections	In-Out (Thread) / Material	1/2" NPS / Copper	3/4" NPS / Copper				3/4" NPS / Copper				1 1/4" NPS / Copper	
	Condensate Drain / Material	3/4" NPT / GI Steel , Externally Threaded										
Cabinet Size	Height	MM	340 +/- 5									
	Width	MM	610 +/- 5									
	Length	MM	635	785	885	1015	1145	1315	1378	1582	1759	1935
Casing Material / Thickness		Galvanized Steel / up to 1.2 MM										
Casing Treatment / External Finish		Z275 (G90) Zinc Coating, polyester powder coated (RAL9002)										
Net Weight		KG	29	32	35	39	50	54	56	62	69	87

Note:
 * Based on motor at high speed, standard air and dry coil operation; 5.6°C water temperature rise; entering air temperature 24.4°C DB; 17.2°C WB; entering water temperature 7.2°C.

Electronically Commutated Motor (ECM) is available for all sizes - Optional.



Controller (Optional)

-- For other design conditions, please apply the selection program to finalize your applications --

TECHNICAL DATA

42MEHD SERIES HIGH STATIC WITH PLENUM – DISTRICT COOLING HIGH ΔT

DUCTED

PERFORMANCE			MEHD06S	MEHD08S	MEHD10S	MEHD12S	MEHD14S	MEHD16S	MEHD18S	MEHD20S	MEHD24S	MEHD30S
			HIGH STATIC DISTRICT COOLING UNIT									
Nominal Air Volume	High	CFM	597	800	1000	1197	1396	1596	1796	2000	2381	3220
		L/S	282	378	472	565	659	754	848	944	1124	1520
Cooling Capacity (Fluid)*		KW	5.42	6.89	8.52	9.72	11.71	14.05	15.90	16.61	21.50	26.63
		BTU/HR	18498	23515	29078	33174	39966	47952	54266	56689	73379	90887
Motor Nominal Power Output		W	100	150	200	250	300	300	400	500	500	750
Motor Current		AMP	Refer Page 37									
Sound Pressure	High	dB (A)	48	53	54	54	54	56	56	58	58	58
	Med		46	51	53	53	52	54	54	57	57	57
	Low		43	48	50	50	49	51	51	51	52	52
Water Flow		L/S	0.145	0.185	0.228	0.260	0.314	0.376	0.426	0.445	0.576	0.713
Water Pressure Drop		KPA	20.70	16.00	15.10	13.50	13.90	20.60	15.10	13.80	23.70	73.70
Fan Type		Centrifugal Forward-Curved Blades										
Motor Type		Permanent Split Capacitor										
Coil	Rows	NOS	4									
	Face Area	SQ.FT	2.33	2.66	3.08	3.51	4.07	4.27	4.94	5.52	6.10	6.76
	Coil Water Volume	M ³	0.00241	0.00275	0.00320	0.00364	0.00422	0.00443	0.00512	0.00573	0.00633	0.00701
	Working Pressure	MPa	1.72									
Connections	In-Out (Thread) / Material	1/2" NPS / Copper	3/4" NPS / Copper				3/4" NPS / Copper				1 1/4" NPS / Copper	
	Condensate Drain / Material	3/4" NPT / GI Steel , Externally Threaded										
Cabinet Size	Height	MM	335 +/- 5									
	Width	MM	630 +/- 5									
	Length	MM	890	940	1090	1190	1390	1440	1690	1840	1990	2240
Casing Material / Thickness		Galvanized Steel / up to 1.0 MM										
Casing Treatment / External Finish		Non-painted , Z275 (G90) Zinc Coating										
Net Weight		KG	26	29	32	35	45	47	52	57	63	78

Note:

* Based on motor at high speed, standard air and dry coil operation; 8.9°C water temperature rise; entering air temperature 24.4°C DB; 17.2°C WB; entering water temperature 5.5°C.

Electronically Commutated Motor (ECM) is available for all sizes - Optional.



Controller (Optional)

-- For other design conditions, please apply the selection program to finalize your applications --

TECHNICAL DATA

42MEHD SERIES HIGH STATIC WITH PLENUM – DISTRICT COOLING HIGH ΔT

DUCTED-DOUBLE SKIN

PERFORMANCE			MEHD06D	MEHD08D	MEHD10D	MEHD12D	MEHD14D	MEHD16D	MEHD18D	MEHD20D	MEHD24D	MEHD30D
			HIGH STATIC DISTRICT COOLING UNIT									
Nominal Air Volume	High	CFM	597	800	1000	1197	1396	1596	1796	2000	2381	3220
		L/S	282	378	472	565	659	754	848	944	1124	1520
Cooling Capacity (Fluid)*		KW	5.42	6.89	8.52	9.72	11.71	14.05	15.90	16.61	21.50	26.63
		BTU/HR	18498	23515	29078	33174	39966	47952	54266	56689	73379	90887
Motor Nominal Power Output		W	100	150	200	250	300	300	400	500	500	750
Motor Current		AMP	Refer Page 37									
Sound Pressure	High	dB (A)	48	53	54	54	54	56	56	58	58	58
	Med		46	51	53	53	52	54	54	57	57	57
	Low		43	48	50	50	49	51	51	51	52	52
Water Flow		L/S	0.145	0.185	0.228	0.260	0.314	0.376	0.426	0.445	0.576	0.713
Water Pressure Drop		KPA	20.70	16.00	15.10	13.50	13.90	20.60	15.10	13.80	23.70	73.70
Fan Type		Centrifugal Forward-Curved Blades										
Motor Type		Permanent Split Capacitor										
Coil	Rows	NOS	4									
	Face Area	SQ.FT	2.33	2.66	3.08	3.51	4.07	4.27	4.94	5.52	6.10	6.76
	Coil Water Volume	M ³	0.00241	0.00275	0.00320	0.00364	0.00422	0.00443	0.00512	0.00573	0.00633	0.00701
	Working Pressure	MPa	1.72									
Connections	In-Out (Thread) / Material	1/2" NPS / Copper	3/4" NPS / Copper				3/4" NPS / Copper				1 1/4" NPS / Copper	
	Condensate Drain / Material	3/4" NPT / GI Steel , Externally Threaded										
Cabinet Size	Height	MM	360 +/- 5									
	Width	MM	630 +/- 5									
	Length	MM	890	940	1090	1190	1390	1440	1690	1840	1990	2250
Casing Material / Thickness		Galvanized Steel up to 1.0 MM										
Casing Treatment / External Finish		Non-painted , Z275 (G90) Zinc Coating										
Net Weight		KG	32	35	39	43	54	56	62	68	75	90

Note:
 * Based on motor at high speed, standard air and dry coil operation; 8.9°C water temperature rise; entering air temperature 24.4°C DB; 17.2°C WB; entering water temperature 5.5°C.

Electronically Commutated Motor (ECM) is available for all sizes - Optional.



Controller (Optional)

- - For other design conditions, please apply the selection program to finalize your applications - -

TECHNICAL DATA

42MEHD SERIES WITH CABINET – DISTRICT COOLING HIGH ΔT

EXPOSED DECORATIVE

PERFORMANCE			MEHD06E	MEHD08E	MEHD10E	MEHD12E	MEHD14E	MEHD16E	MEHD18E	MEHD20E	MEHD24E	MEHD30E
			DISTRICT COOLING UNIT									
Nominal Air Volume	High	CFM	597	800	1000	1197	1396	1596	1796	2000	2381	3220
		L/S	282	378	472	565	659	754	848	944	1124	1520
Cooling Capacity (Fluid)*		KW	5.42	6.89	8.52	9.72	11.71	14.05	15.90	16.61	21.50	26.63
		BTU/HR	18498	23515	29078	33174	39966	47952	54266	56689	73379	90887
Motor Nominal Power Output		W	100	150	200	250	300	300	400	500	500	750
Motor Current		AMP	Refer Page 37									
Sound Pressure	High	dB (A)	48	53	54	54	54	56	56	58	58	58
	Med		46	51	53	53	52	54	54	57	57	57
	Low		43	48	50	50	49	51	51	51	52	52
Water Flow		L/S	0.145	0.185	0.228	0.260	0.314	0.376	0.426	0.445	0.576	0.713
Water Pressure Drop		KPA	20.70	16.00	15.10	13.50	13.90	20.60	15.10	13.80	23.70	73.70
Fan Type			Centrifugal Forward-Curved Blades									
Motor Type			Permanent Split Capacitor									
Coil	Rows	NOS	4									
	Face Area	SQ.FT	2.33	2.66	3.08	3.51	4.07	4.27	4.94	5.52	6.10	6.76
	Coil Water Volume	M ³	0.00241	0.00275	0.00320	0.00364	0.00422	0.00443	0.00512	0.00573	0.00633	0.00701
	Working Pressure	MPa	1.72									
Connections	In-Out (Thread) / Material	1/2" NPS / Copper	3/4" NPS / Copper				3/4" NPS / Copper				1 1/4" NPS / Copper	
	Condensate Drain / Material	3/4" NPT / GI Steel , Externally Threaded										
Cabinet Size	Height	MM	340 +/- 5									
	Width	MM	610 +/- 5									
	Length	MM	785	885	1015	1145	1315	1378	1582	1759	1935	2135
Casing Material / Thickness			Galvanized Steel / up to 1.2 MM									
Casing Treatment / External Finish			Z275 (G90) Zinc Coating, polyester powder coated (RAL9002)									
Net Weight		KG	32	35	39	43	54	56	62	69	87	95

Note:
 * Based on motor at high speed, standard air and dry coil operation; 8.9°C water temperature rise; entering air temperature 24.4°C DB; 17.2°C WB; entering water temperature 5.5°C.

Electronically Commutated Motor (ECM) is available for all sizes - Optional.

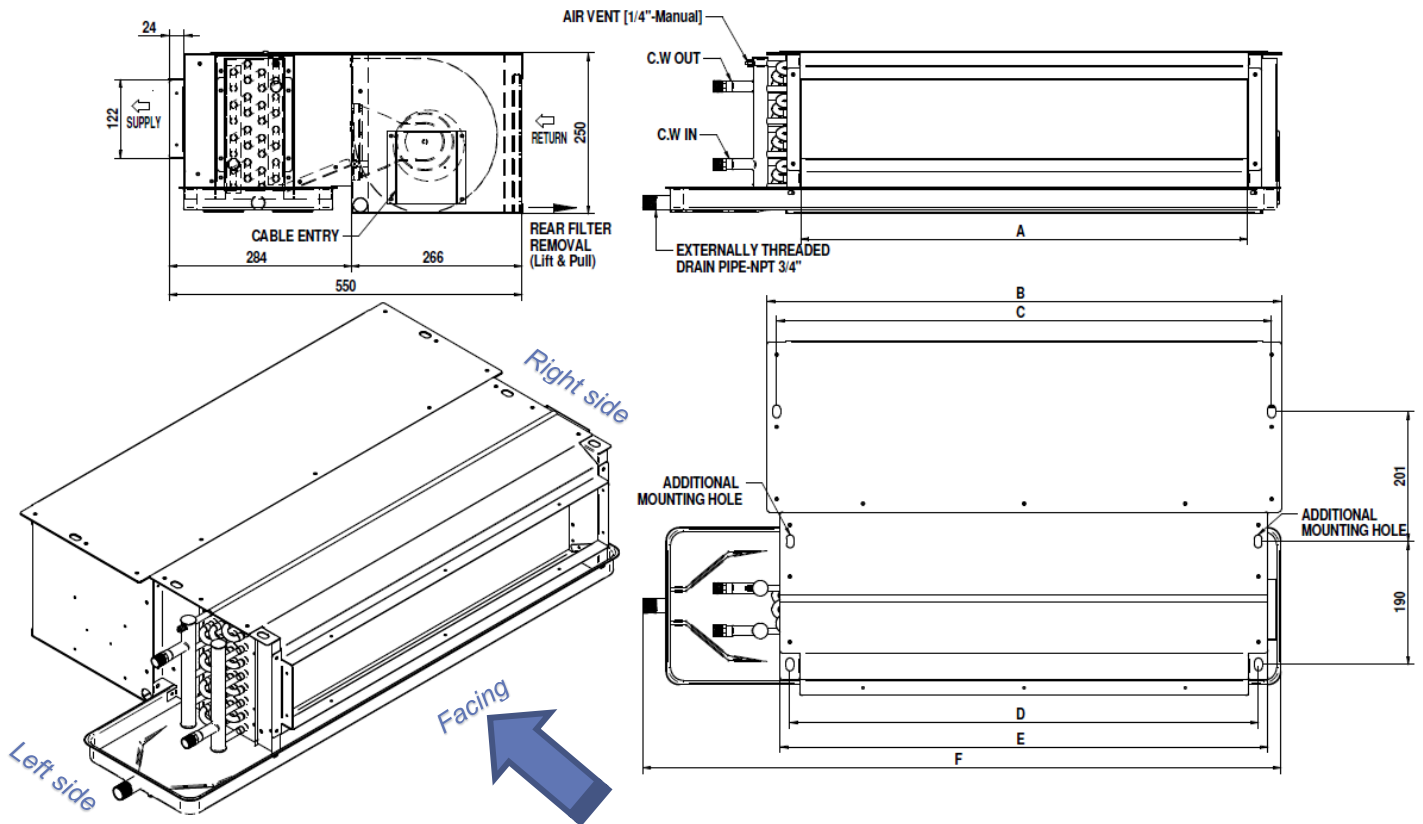


Controller (Optional)

-- For other design conditions, please apply the selection program to finalize your applications --

UNIT DIMENSIONS & WEIGHT

42MEL SERIES LOW STATIC DUCTED FCU WITH PLENUM



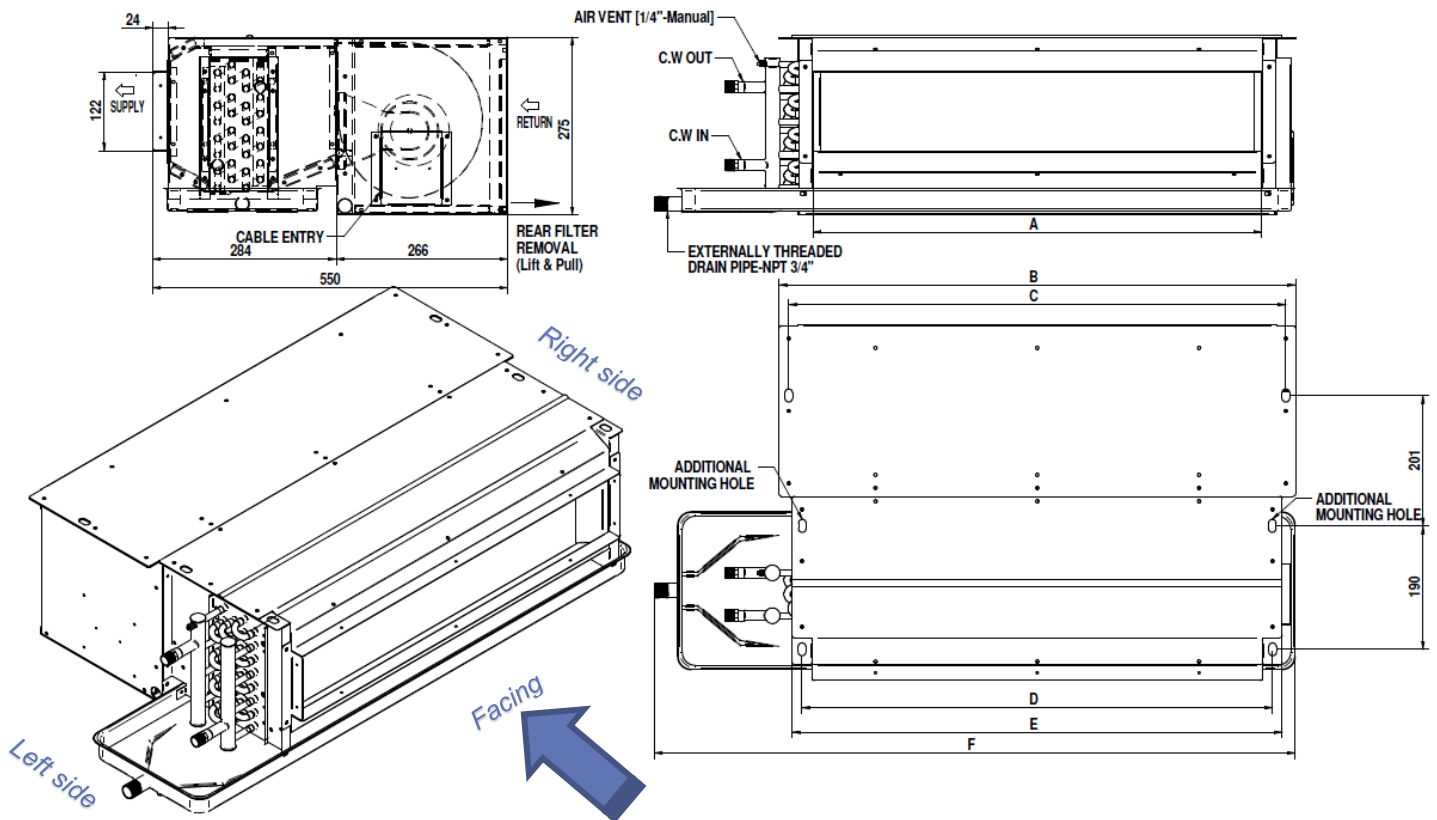
No.	Unit Model	A	B	C	D	E	F	C.W IN/OUT	NET WEIGHT
01	MEL-02S	496	598	568	528	558	790	1/2" NPS	18 KG
02	MEL-03S	596	698	668	628	658	890	1/2" NPS	20 KG
03	MEL-04S	696	798	768	728	758	990	1/2" NPS	23 KG
04	MEL-06S	926	1028	998	958	988	1240	1/2" NPS	28 KG
05	MEL-08S	1196	1298	1268	1228	1258	1490	3/4" NPS	36 KG
06	MEL-10S	1396	1498	1468	1428	1458	1690	3/4" NPS	41 KG
07	MEL-12S	1596	1698	1668	1628	1658	1890	3/4" NPS	45 KG

Note:

1. Dimensions are in mm.
2. Above shown with left hand coil connection.
3. Wiring connection is located at the opposite side of coil and drain connections.

UNIT DIMENSIONS & WEIGHT

42MEL SERIES LOW STATIC DOUBLE SKIN DUCTED FCU WITH PLENUM



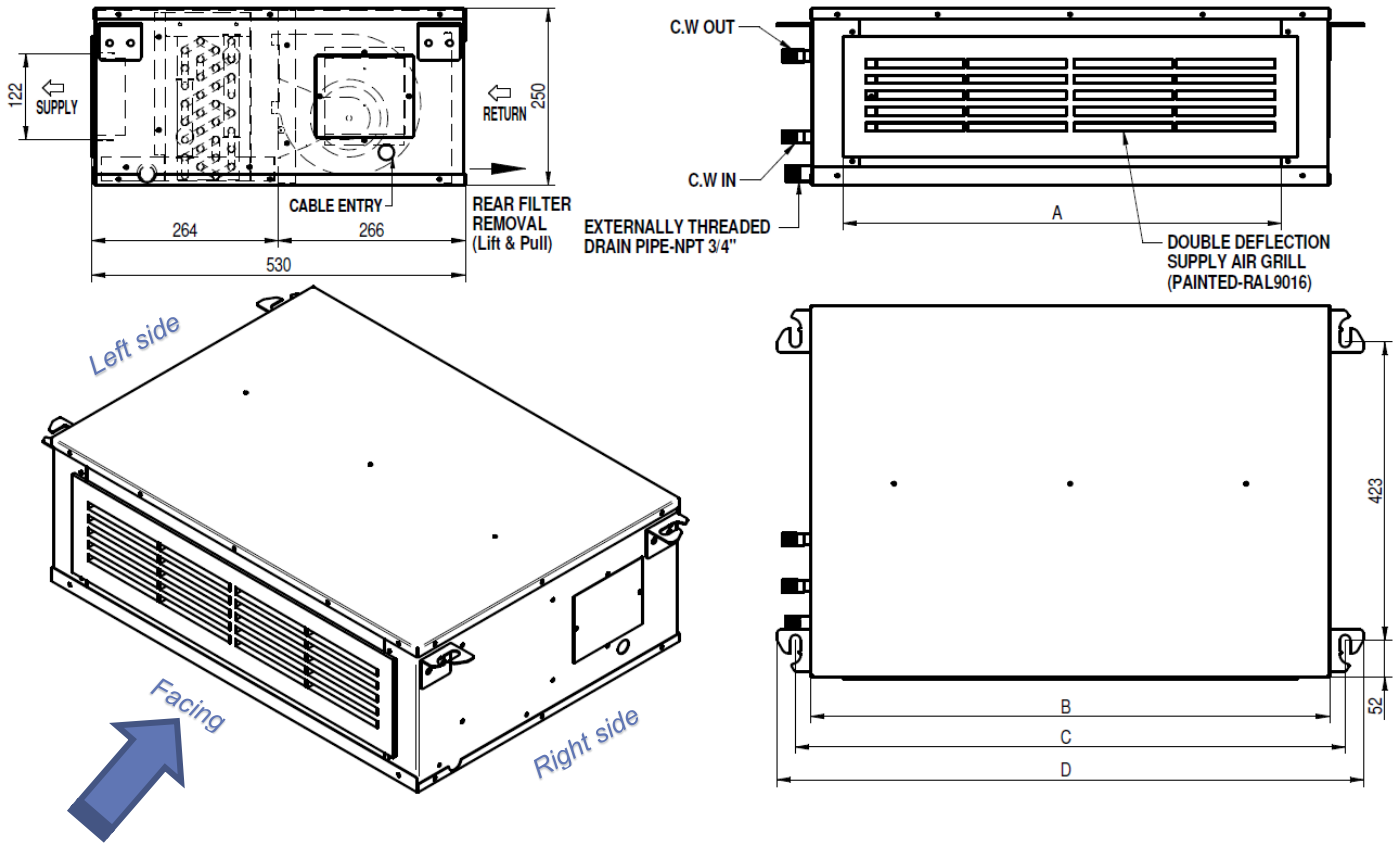
No.	Unit Model	A	B	C	D	E	F	C.W IN/OUT	NET WEIGHT
01	MEL-02D	496	598	568	528	558	790	1/2" NPS	23 KG
02	MEL-03D	596	698	668	628	658	890	1/2" NPS	26 KG
03	MEL-04D	696	798	768	728	758	990	1/2" NPS	29 KG
04	MEL-06D	926	1028	998	958	988	1240	1/2" NPS	35 KG
05	MEL-08D	1196	1298	1268	1228	1258	1490	3/4" NPS	45 KG
06	MEL-10D	1396	1498	1468	1428	1458	1690	3/4" NPS	51 KG
07	MEL-12D	1596	1698	1668	1628	1658	1890	3/4" NPS	56 KG

Note:

1. Dimensions are in mm.
2. Above shown with left hand coil connection.
3. Wiring connection is located at the opposite side of coil and drain connections.

UNIT DIMENSIONS & WEIGHT

42MEL SERIES EXPOSED DECORATIVE FCU WITH CABINET



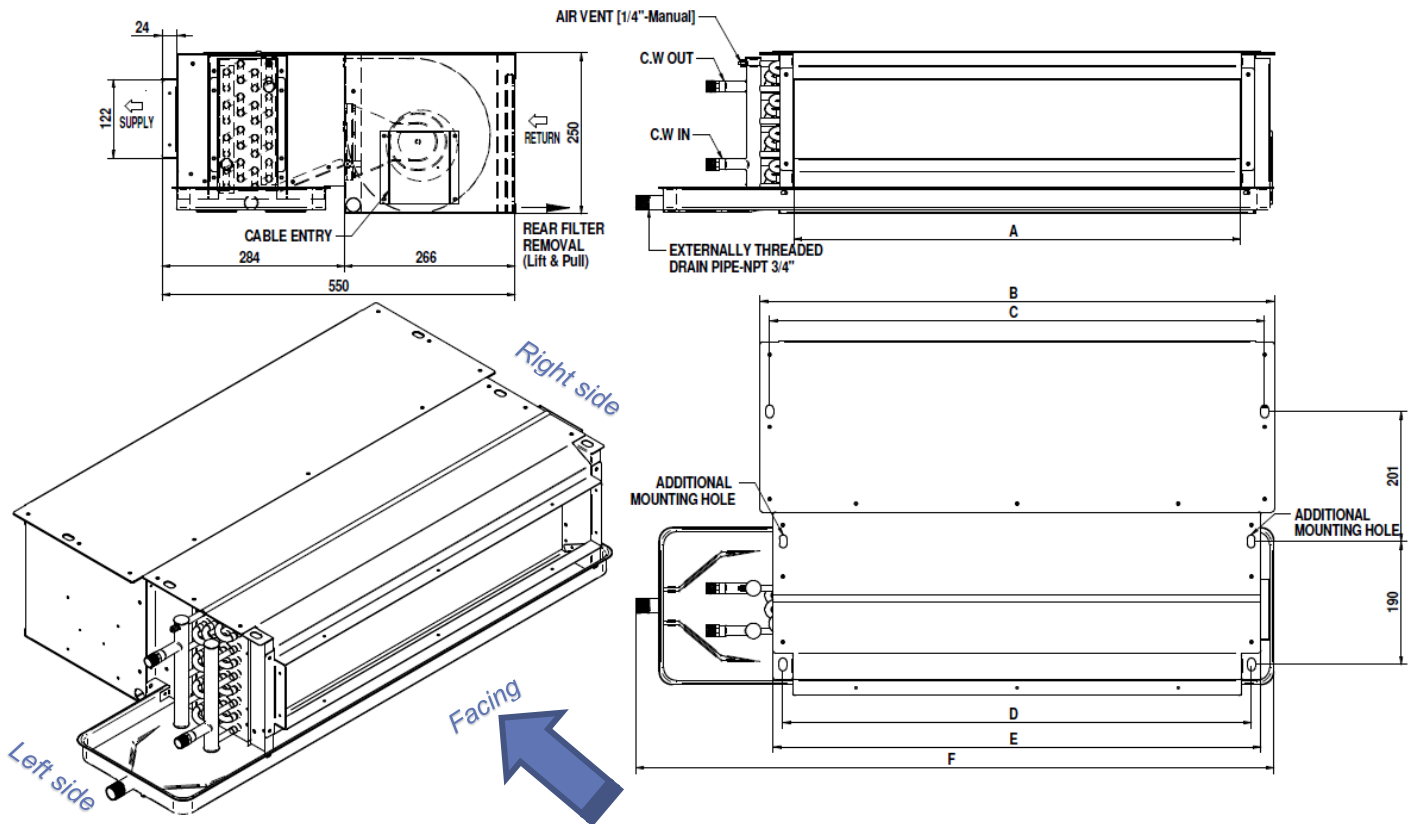
No.	Unit Model	A	B	C	D	C.W IN/OUT	NET WEIGHT
01	MEL-02E	496	636	680	732	1/2" NPS	24 KG
02	MEL-03E	596	736	780	832	1/2" NPS	27 KG
03	MEL-04E	696	836	880	932	1/2" NPS	30 KG
04	MEL-06E	926	1066	1110	1162	1/2" NPS	37 KG
05	MEL-08E	1196	1336	1380	1432	3/4" NPS	46 KG
06	MEL-10E	1396	1536	1580	1632	3/4" NPS	53 KG
07	MEL-12E	1596	1736	1780	1832	3/4" NPS	58 KG

Note:

1. Dimensions are in mm.
2. Above shown with left hand coil connection.
3. Wiring connection is located at the opposite side of coil and drain connections.

UNIT DIMENSIONS & WEIGHT

42MELD SERIES LOW STATIC DUCTED FCU WITH PLENUM



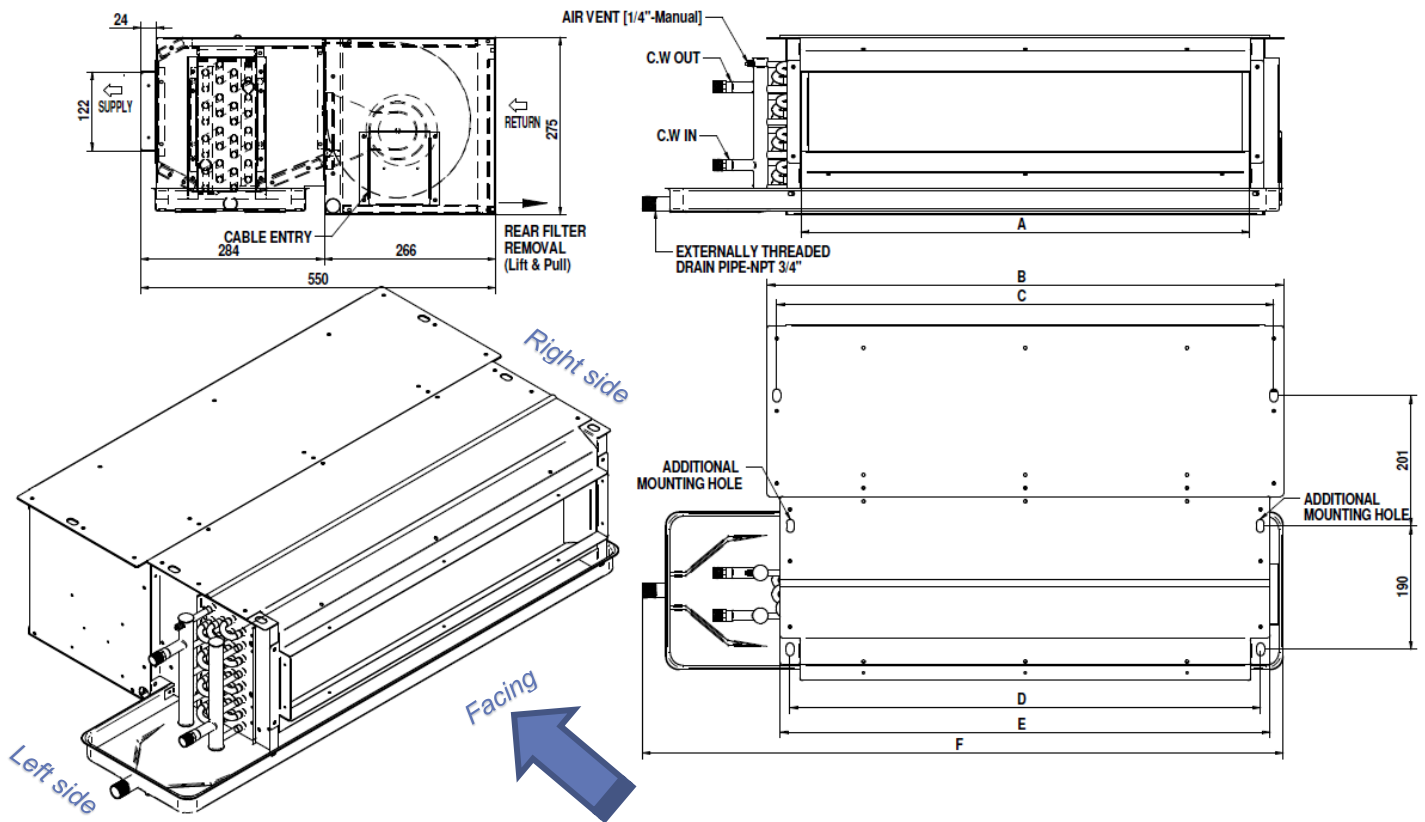
No.	Unit Model	A	B	C	D	E	F	C.W IN/OUT	NET WEIGHT
01	MELD02S	496	598	568	528	558	790	1/2" NPS	18 KG
02	MELD03S	596	698	668	628	658	890	1/2" NPS	20 KG
03	MELD04S	696	798	768	728	758	990	1/2" NPS	23 KG
04	MELD06S	926	1028	998	958	988	1240	1/2" NPS	28 KG
05	MELD08S	1196	1298	1268	1228	1258	1490	3/4" NPS	36 KG
06	MELD10S	1396	1498	1468	1428	1458	1690	3/4" NPS	41 KG
07	MELD12S	1596	1698	1668	1628	1658	1890	3/4" NPS	45 KG

Note:

1. Dimensions are in mm.
2. Above shown with left hand coil connection.
3. Wiring connection is located at the opposite side of coil and drain connections.

UNIT DIMENSIONS & WEIGHT

42MELD SERIES LOW STATIC DOUBLE SKIN DUCTED FCU WITH PLENUM



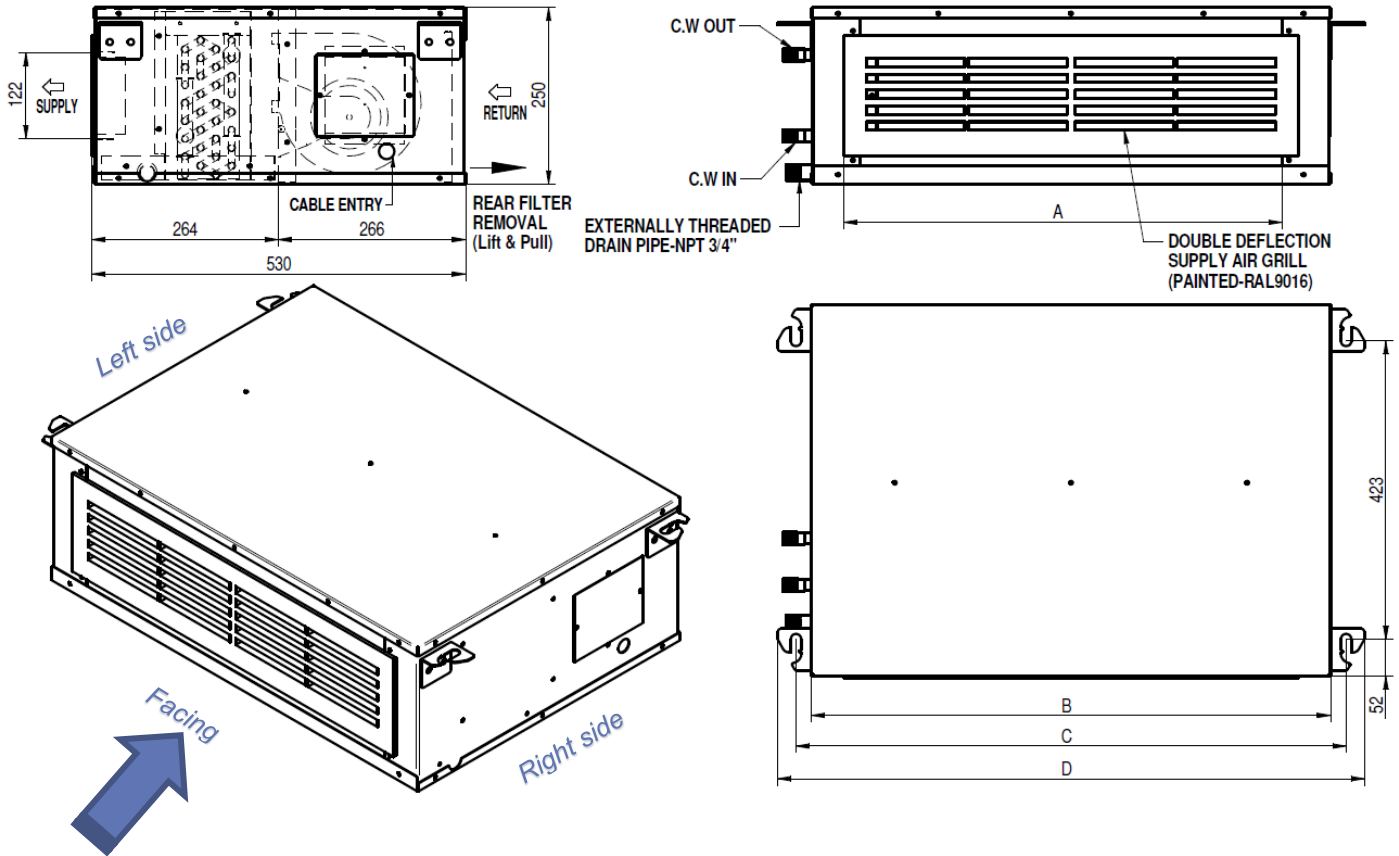
No.	Unit Model	A	B	C	D	E	F	C.W IN/OUT	NET WEIGHT
01	MELD02D	496	598	568	528	558	790	1/2" NPS	23 KG
02	MELD03D	596	698	668	628	658	890	1/2" NPS	26 KG
03	MELD04D	696	798	768	728	758	990	1/2" NPS	29 KG
04	MELD06D	926	1028	998	958	988	1240	1/2" NPS	35 KG
05	MELD08D	1196	1298	1268	1228	1258	1490	3/4" NPS	45 KG
06	MELD10D	1396	1498	1468	1428	1458	1690	3/4" NPS	51 KG
07	MELD12D	1596	1698	1668	1628	1658	1890	3/4" NPS	56 KG

Note:

1. Dimensions are in mm.
2. Above shown with left hand coil connection.
3. Wiring connection is located at the opposite side of coil and drain connections.

UNIT DIMENSIONS & WEIGHT

42MELD SERIES EXPOSED DECORATIVE FCU WITH CABINET



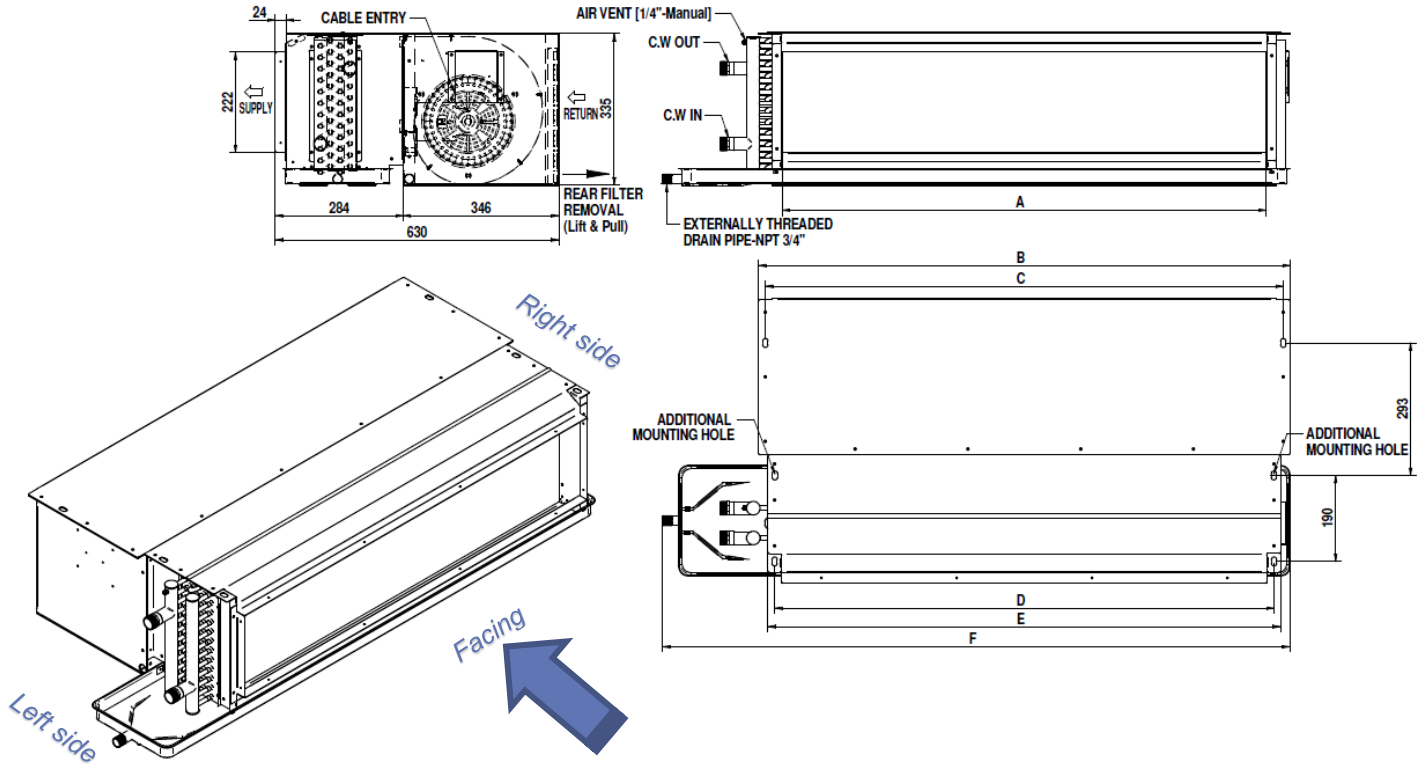
No.	Unit Model	A	B	C	D	C.W IN/OUT	NET WEIGHT
01	MELD02E	496	636	680	732	1/2" NPS	24 KG
02	MELD03E	596	736	780	832	1/2" NPS	27 KG
03	MELD04E	696	836	880	932	1/2" NPS	30 KG
04	MELD06E	926	1066	1110	1162	1/2" NPS	37 KG
05	MELD08E	1196	1336	1380	1432	3/4" NPS	46 KG
06	MELD10E	1396	1536	1580	1632	3/4" NPS	53 KG
07	MELD12E	1596	1736	1780	1832	3/4" NPS	58 KG

Note:

1. Dimensions are in mm.
2. Above shown with left hand coil connection.
3. Wiring connection is located at the opposite side of coil and drain connections.

UNIT DIMENSIONS & WEIGHT

42MEH SERIES HIGH STATIC DUCTED FCU WITH PLENUM



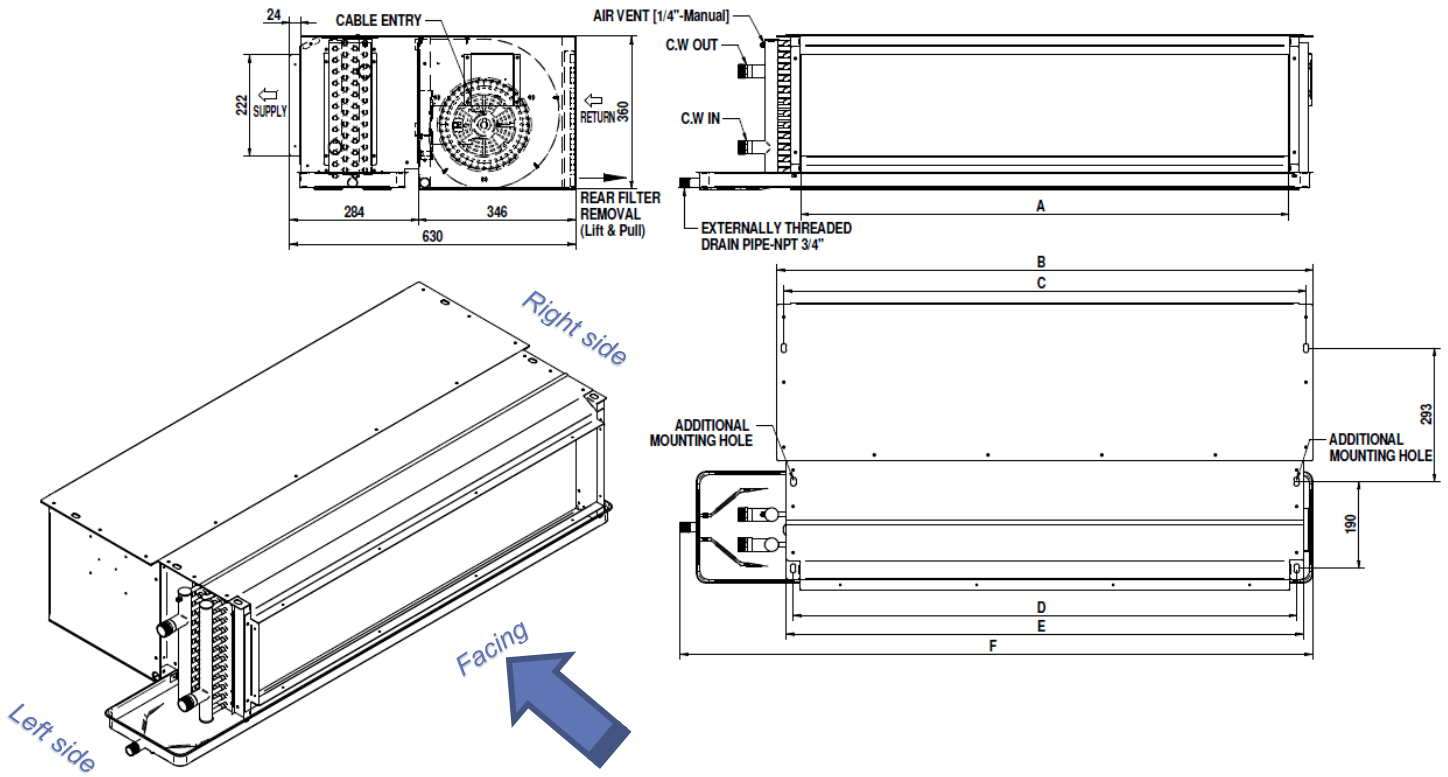
No.	Unit Model	A	B	C	D	E	F	C.W IN/OUT	NET WEIGHT
01	MEH-06S	400	498	468	428	458	790	1/2" NPS	24 KG
02	MEH-08S	550	648	618	578	608	890	3/4" NPS	26 KG
03	MEH-10S	650	748	718	678	708	940	3/4" NPS	29 KG
04	MEH-12S	780	878	848	808	838	1090	3/4" NPS	32 KG
05	MEH-14S	910	1008	978	938	968	1190	1" NPS	42 KG
06	MEH-16S	1080	1178	1148	1108	1138	1390	1" NPS	45 KG
07	MEH-18S	1143	1241	1211	1171	1201	1440	1" NPS	47 KG
08	MEH-20S	1347	1445	1415	1375	1405	1690	1" NPS	52 KG
09	MEH-24S	1524	1622	1592	1552	1582	1840	1 1/4" NPS	58 KG
10	MEH-30S	1700	1798	1768	1728	1758	1990	1 1/4" NPS	75 KG

Note:

1. Dimensions are in mm.
2. Above shown with left hand coil connection.
3. Wiring connection is located at the opposite side of coil and drain connections.

UNIT DIMENSIONS & WEIGHT

42MEH SERIES HIGH STATIC DOUBLE SKIN DUCTED FCU WITH PLENUM



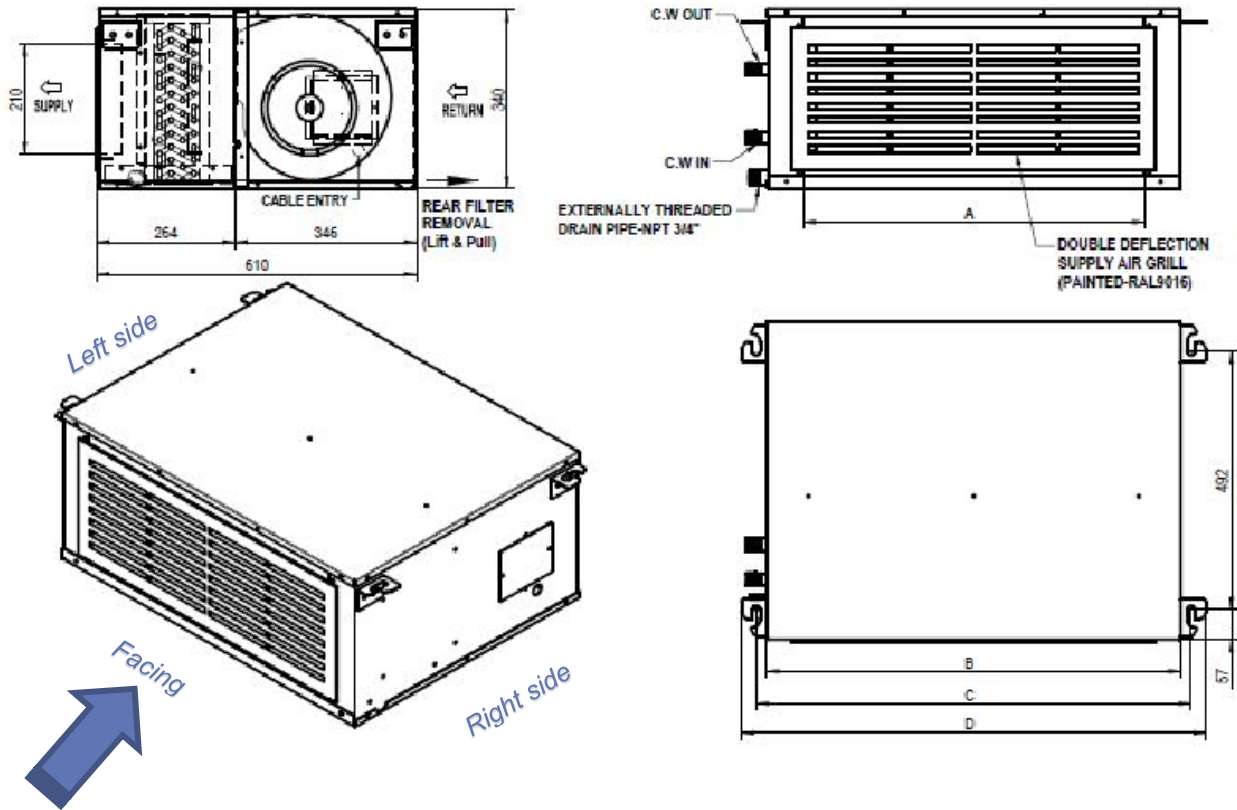
No.	Unit Model	A	B	C	D	E	F	C.W IN/OUT	NET WEIGHT
01	MEH-06D	400	498	468	428	458	790	1/2" NPS	29 KG
02	MEH-08D	550	648	618	578	608	890	3/4" NPS	32 KG
03	MEH-10D	650	748	718	678	708	940	3/4" NPS	35 KG
04	MEH-12D	780	878	848	808	838	1090	3/4" NPS	39 KG
05	MEH-14D	910	1008	978	938	968	1190	1" NPS	50 KG
06	MEH-16D	1080	1178	1148	1108	1138	1390	1" NPS	54 KG
07	MEH-18D	1143	1241	1211	1171	1201	1440	1" NPS	56 KG
08	MEH-20D	1347	1445	1415	1375	1405	1690	1" NPS	62 KG
09	MEH-24D	1524	1622	1592	1552	1582	1840	1 1/4" NPS	69 KG
10	MEH-30D	1700	1798	1768	1728	1758	1990	1 1/4" NPS	87 KG

Note:

1. Dimensions are in mm.
2. Above shown with left hand coil connection.
3. Wiring connection is located at the opposite side of coil and drain connections.

UNIT DIMENSIONS & WEIGHT

42MEH SERIES EXPOSED DECORATIVE FCU WITH CABINET



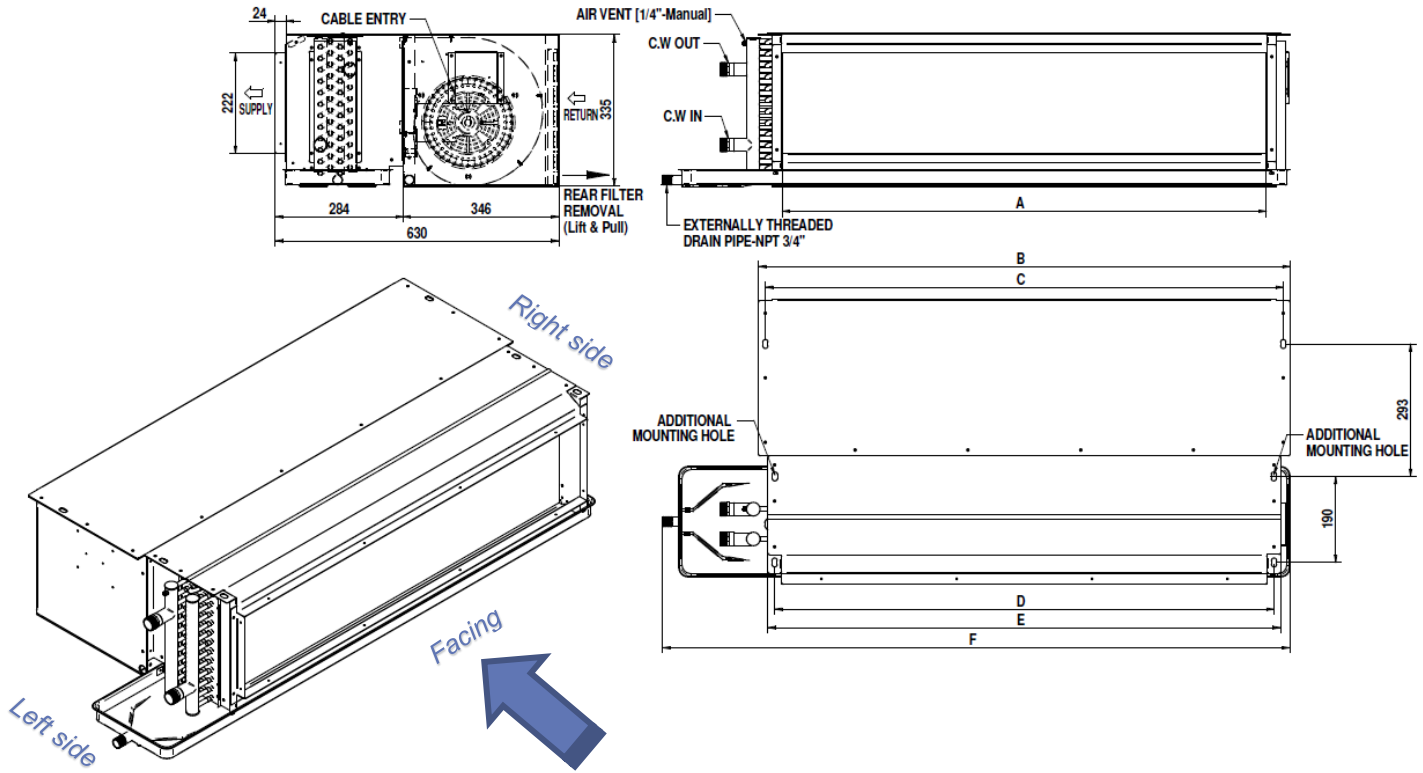
No.	Unit Model	A	B	C	D	C.W IN/OUT	NET WEIGHT
01	MEH06E	400	540	580	635	1/2" NPS	29 KG
02	MEH08E	550	690	730	785	3/4" NPS	32 KG
03	MEH10E	650	790	830	885	3/4" NPS	35 KG
04	MEH12E	780	920	960	1015	3/4" NPS	39 KG
05	MEH14E	910	1050	1090	1145	1" NPS	50 KG
06	MEH16E	1080	1220	1260	1315	1" NPS	54 KG
07	MEH18E	1143	1283	1323	1378	1" NPS	56 KG
08	MEH20E	1347	1487	1527	1582	1" NPS	62 KG
09	MEH24E	1524	1664	1704	1759	1 1/4" NPS	69 KG
10	MEH30E	1700	1840	1880	1935	1 1/4" NPS	87 KG

Note:

1. Dimensions are in mm.
2. Above shown with left hand coil connection.
3. Wiring connection is located at the opposite side of coil and drain connections

UNIT DIMENSIONS & WEIGHT

42MEHD SERIES HIGH STATIC DUCTED FCU WITH PLENUM



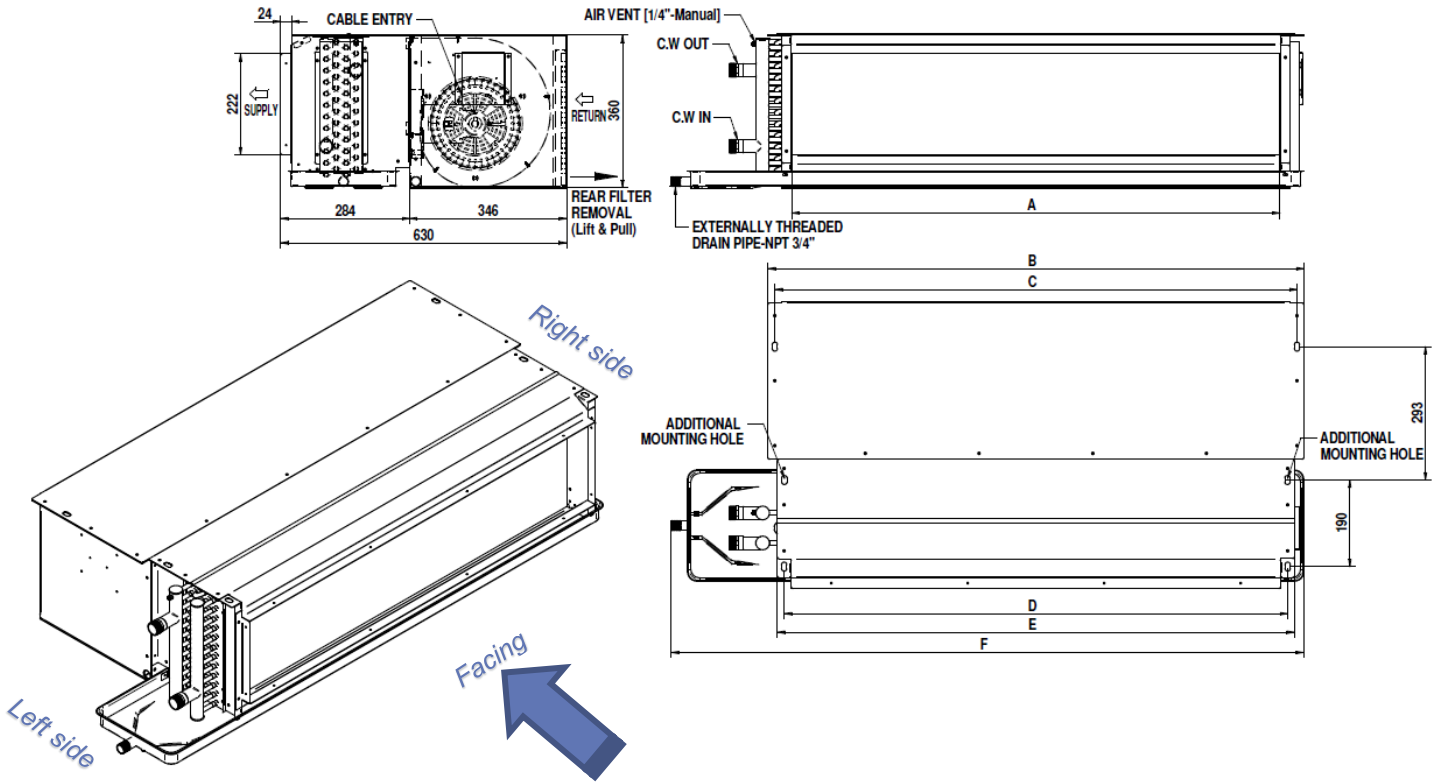
No.	Unit Model	A	B	C	D	E	F	C.W IN/OUT	NET WEIGHT
01	MEHD06S	550	648	618	578	608	890	1/2" NPS	26 KG
02	MEHD08S	650	748	718	678	708	940	3/4" NPS	29 KG
03	MEHD10S	780	878	848	808	838	1090	3/4" NPS	32 KG
04	MEHD12S	910	1008	978	938	968	1190	3/4" NPS	35 KG
05	MEHD14S	1080	1178	1148	1108	1138	1390	1" NPS	45 KG
06	MEHD16S	1143	1241	1211	1171	1201	1440	1" NPS	47 KG
07	MEHD18S	1347	1445	1415	1375	1405	1690	1" NPS	52 KG
08	MEHD20S	1524	1622	1592	1552	1582	1840	1" NPS	57 KG
09	MEHD24S	1700	1798	1768	1728	1758	1990	1 1/4" NPS	63 KG
10	MEHD30S	1900	1998	1968	1928	1958	2250	1 1/4" NPS	78 KG

Note:

1. Dimensions are in mm.
2. Above shown with left hand coil connection.
3. Wiring connection is located at the opposite side of coil and drain connections.

UNIT DIMENSIONS & WEIGHT

42MEHD SERIES HIGH STATIC DOUBLE SKIN DUCTED FCU WITH PLENUM



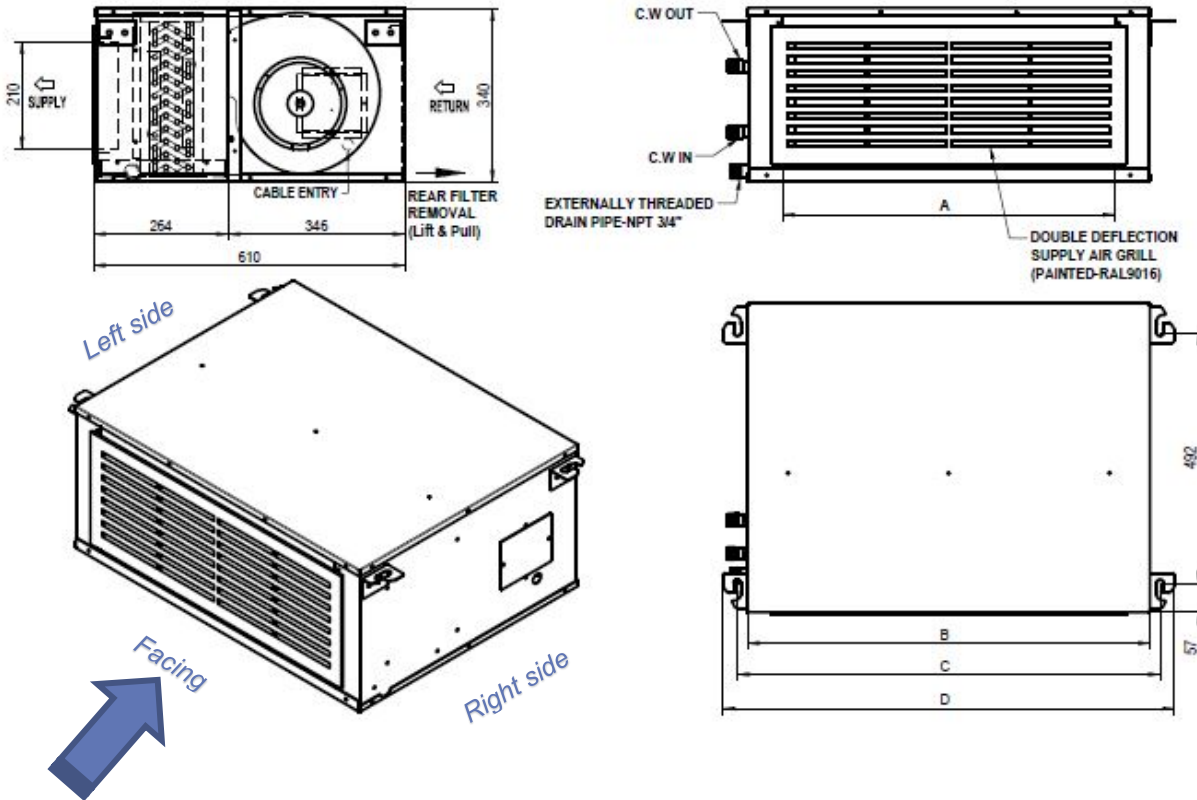
No.	Unit Model	A	B	C	D	E	F	C.W IN/OUT	NET WEIGHT
01	MEHD06D	550	648	618	578	608	890	1/2" NPS	32 KG
02	MEHD08D	650	748	718	678	708	940	3/4" NPS	35 KG
03	MEHD10D	780	878	848	808	838	1090	3/4" NPS	39 KG
04	MEHD12D	910	1008	978	938	968	1190	3/4" NPS	43 KG
05	MEHD14D	1080	1178	1148	1108	1138	1390	1" NPS	54 KG
06	MEHD16D	1143	1241	1211	1171	1201	1440	1" NPS	56 KG
07	MEHD18D	1347	1445	1415	1375	1405	1690	1" NPS	62 KG
08	MEHD20D	1524	1622	1592	1552	1582	1840	1" NPS	68 KG
09	MEHD24D	1700	1798	1768	1728	1758	1990	1 1/4" NPS	75 KG
10	MEHD30D	1900	1998	1968	1928	1958	2250	1 1/4" NPS	90 KG

Note:

1. Dimensions are in mm.
2. Above shown with left hand coil connection.
3. Wiring connection is located at the opposite side of coil and drain connections.

UNIT DIMENSIONS & WEIGHT

42MEHD SERIES EXPOSED DECORATIVE FCU WITH CABINET



No.	Unit Model	A	B	C	D	C.W IN/OUT	NET WEIGHT
01	MEHD06E	550	690	730	785	1/2" NPS	32 KG
02	MEHD08E	650	790	830	885	3/4" NPS	35 KG
03	MEHD10E	780	920	960	1015	3/4" NPS	39 KG
04	MEHD12E	910	1050	1090	1145	3/4" NPS	50 KG
05	MEHD14E	1080	1220	1260	1315	1" NPS	54 KG
06	MEHD16E	1143	1283	1323	1378	1" NPS	56 KG
07	MEHD18E	1347	1487	1527	1582	1" NPS	62 KG
08	MEHD20E	1524	1664	1704	1759	1" NPS	69 KG
09	MEHD24E	1700	1840	1880	1935	1 1/4" NPS	87 KG
10	MEHD30E	1900	2040	2080	2135	1 1/4" NPS	95 KG

Note:

1. Dimensions are in mm.
2. Above shown with left hand coil connection.
3. Wiring connection is located at the opposite side of coil and drain connections.

PERFORMANCE RATING

42MEL SERIES LOW STATIC DUCTED FCU WITH PLENUM

Model MEL-	Speed	ESP (Pa)	Air Flow (L/S)	Capacity (KW)		Air Off FCU (°C)		Water Flow (L/S)	Water Pressure Drop (kPa)
				Total	Sensible	DB	WB		
02S	High	50	98	1.50	1.26	12.80	12.10	0.06	3.00
	Medium		90	1.40	1.16	12.70	12.00	0.06	2.70
	Low		63	1.05	0.84	12.40	11.60	0.05	1.90
03S	High	50	198	2.58	2.33	13.80	12.90	0.11	6.10
	Medium		165	2.27	2.00	13.40	12.70	0.10	4.80
	Low		114	1.72	1.46	12.80	12.20	0.07	1.90
04S	High	50	227	3.43	2.91	12.80	12.20	0.15	11.70
	Medium		189	2.80	2.40	12.90	12.30	0.12	8.00
	Low		130	2.03	1.70	12.60	12.00	0.09	2.70
06S	High	50	340	5.51	4.58	12.20	11.80	0.24	19.50
	Medium		283	4.58	3.82	12.20	11.80	0.20	13.70
	Low		195	3.07	2.58	12.40	11.90	0.13	6.50
08S	High	50	453	5.58	5.08	14.20	13.20	0.24	6.10
	Medium		378	4.61	4.23	14.30	13.20	0.20	4.30
	Low		260	3.52	3.12	13.50	12.70	0.15	1.70
10S	High	50	566	8.43	7.17	13.00	12.20	0.36	14.90
	Medium		472	6.87	5.90	13.10	12.40	0.29	10.20
	Low		325	4.52	3.95	13.40	12.60	0.19	4.70
12S	High	50	634	10.31	8.49	12.30	11.70	0.44	23.90
	Medium		529	8.65	7.10	12.30	11.70	0.37	17.20
	Low		365	5.60	4.70	12.80	12.10	0.24	7.60

Note: Air Conditions: EDB/EWB 24.4/17.2°C

Water Conditions: EWT/LWT 7.2/12.8°C

ΔT: 5.6°C.

42MEL SERIES LOW STATIC DOUBLE SKIN DUCTED FCU WITH PLENUM

Model MEL-	Speed	ESP (Pa)	Air Flow (L/S)	Capacity (KW)		Air Off FCU (°C)		Water Flow (L/S)	Water Pressure Drop (kPa)
				Total	Sensible	DB	WB		
02D	High	50	98	1.50	1.26	12.80	12.10	0.06	3.00
	Medium		90	1.40	1.16	12.70	12.00	0.06	2.70
	Low		63	1.05	0.84	12.40	11.60	0.05	1.90
03D	High	50	198	2.58	2.33	13.80	12.90	0.11	6.10
	Medium		165	2.27	2.00	13.40	12.70	0.10	4.80
	Low		114	1.72	1.46	12.80	12.20	0.07	1.90
04D	High	50	227	3.43	2.91	12.80	12.20	0.15	11.70
	Medium		189	2.80	2.40	12.90	12.30	0.12	8.00
	Low		130	2.03	1.70	12.60	12.00	0.09	2.70
06D	High	50	340	5.51	4.58	12.20	11.80	0.24	19.50
	Medium		283	4.58	3.82	12.20	11.80	0.20	13.70
	Low		195	3.07	2.58	12.40	11.90	0.13	6.50
08D	High	50	453	5.58	5.08	14.20	13.20	0.24	6.10
	Medium		378	4.61	4.23	14.30	13.20	0.20	4.30
	Low		260	3.52	3.12	13.50	12.70	0.15	1.70
10D	High	50	566	8.43	7.17	13.00	12.20	0.36	14.90
	Medium		472	6.87	5.90	13.10	12.40	0.29	10.20
	Low		325	4.52	3.95	13.40	12.60	0.19	4.70
12D	High	50	634	10.31	8.49	12.30	11.70	0.44	23.90
	Medium		529	8.65	7.10	12.30	11.70	0.37	17.20
	Low		365	5.60	4.70	12.80	12.10	0.24	7.60

Note: Air Conditions: EDB/EWB 24.4/17.2°C

Water Conditions: EWT/LWT 7.2/12.8°C

ΔT: 5.6°C.

- - For other design conditions, please apply the selection program to finalize your applications - -

PERFORMANCE RATING

42MEL SERIES EXPOSED DECORATIVE FCU WITH CABINET

Model MEL-	Speed	ESP (Pa)	Air Flow (L/S)	Capacity (KW)		Air Off FCU (°C)		Water Flow (L/S)	Water Pressure Drop (kPa)
				Total	Sensible	DB	WB		
02E	High	50	98	1.50	1.26	12.80	12.10	0.06	3.00
	Medium		90	1.40	1.16	12.70	12.00	0.06	2.70
	Low		63	1.05	0.84	12.40	11.60	0.05	1.90
03E	High	50	198	2.58	2.33	13.80	12.90	0.11	6.10
	Medium		165	2.27	2.00	13.40	12.70	0.10	4.80
	Low		114	1.72	1.46	12.80	12.20	0.07	1.90
04E	High	50	227	3.43	2.91	12.80	12.20	0.15	11.70
	Medium		189	2.80	2.40	12.90	12.30	0.12	8.00
	Low		130	2.03	1.70	12.60	12.00	0.09	2.70
06E	High	50	340	5.51	4.58	12.20	11.80	0.24	19.50
	Medium		283	4.58	3.82	12.20	11.80	0.20	13.70
	Low		195	3.07	2.58	12.40	11.90	0.13	6.50
08E	High	50	453	5.58	5.08	14.20	13.20	0.24	6.10
	Medium		378	4.61	4.23	14.30	13.20	0.20	4.30
	Low		260	3.52	3.12	13.50	12.70	0.15	1.70
10E	High	50	566	8.43	7.17	13.00	12.20	0.36	14.90
	Medium		472	6.87	5.90	13.10	12.40	0.29	10.20
	Low		325	4.52	3.95	13.40	12.60	0.19	4.70
12E	High	50	634	10.31	8.49	12.30	11.70	0.44	23.90
	Medium		529	8.65	7.10	12.30	11.70	0.37	17.20
	Low		365	5.60	4.70	12.80	12.10	0.24	7.60

Note: Air Conditions: EDB/EWB 24.4/17.2°C

Water Conditions: EWT/LWT 7.2/12.8°C

ΔT: 5.6°C.

42MELD SERIES LOW STATIC DUCTED FCU WITH PLENUM

Model MELD	Speed	ESP (Pa)	Air Flow (L/S)	Capacity (KW)		Air Off FCU (°C)		Water Flow (L/S)	Water Pressure Drop (kPa)
				Total	Sensible	DB	WB		
02S	High	50	98	1.55	1.28	12.60	11.90	0.04	5.60
	Medium		90	1.42	1.17	12.60	11.90	0.04	5.10
	Low		63	1.11	0.85	12.10	11.20	0.03	3.80
03S	High	50	198	2.78	2.43	13.30	12.50	0.08	8.20
	Medium		165	2.38	2.07	13.10	12.40	0.06	3.60
	Low		114	1.94	1.56	12.10	11.50	0.05	2.80
04S	High	50	227	3.41	2.91	12.80	12.20	0.09	11.40
	Medium		189	2.94	2.46	12.60	12.00	0.08	8.60
	Low		130	2.10	1.73	12.40	11.80	0.06	2.90
06S	High	50	340	6.02	4.78	11.70	11.20	0.16	40.50
	Medium		283	5.06	4.02	11.60	11.10	0.14	29.20
	Low		195	3.48	2.77	11.60	11.10	0.09	14.50
08S	High	50	453	7.81	6.20	12.00	11.40	0.21	36.30
	Medium		378	6.56	5.22	11.90	11.30	0.18	26.20
	Low		260	4.50	3.60	11.90	11.30	0.12	13.10
10S	High	50	567	9.68	7.74	12.10	11.40	0.26	31.90
	Medium		472	8.02	6.44	12.00	11.50	0.22	22.40
	Low		326	5.56	4.48	11.90	11.40	0.15	11.40
12S	High	50	635	10.40	8.44	12.40	11.70	0.28	21.60
	Medium		529	8.39	6.93	12.60	11.90	0.23	14.50
	Low		365	6.04	4.94	12.20	11.60	0.16	7.90

NOTE: Air Conditions: EDB/EWB 24.4/17.2°C *

Water Conditions: EWT/LWT 5.5/14.4°C

ΔT: 8.9°C

- - For other design conditions, please apply the selection program to finalize your applications - -



PERFORMANCE RATING

42MELD SERIES LOW STATIC DOUBLE SKIN DUCTED FCU WITH PLENUM

Model MELD	Speed	ESP (Pa)	Air Flow (L/S)	Capacity (KW)		Air Off FCU (°C)		Water Flow (L/S)	Water Pressure Drop (kPa)
				Total	Sensible	DB	WB		
02D	High	50	98	1.55	1.28	12.60	11.90	0.04	5.60
	Medium		90	1.42	1.17	12.60	11.90	0.04	5.10
	Low		63	1.11	0.85	12.10	11.20	0.03	3.80
03D	High	50	198	2.78	2.43	13.30	12.50	0.08	8.20
	Medium		165	2.38	2.07	13.10	12.40	0.06	3.60
	Low		114	1.94	1.56	12.10	11.50	0.05	2.80
04D	High	50	227	3.41	2.91	12.80	12.20	0.09	11.40
	Medium		189	2.94	2.46	12.60	12.00	0.08	8.60
	Low		130	2.10	1.73	12.40	11.80	0.06	2.90
06D	High	50	340	6.02	4.78	11.70	11.20	0.16	40.50
	Medium		283	5.06	4.02	11.60	11.10	0.14	29.20
	Low		195	3.48	2.77	11.60	11.10	0.09	14.50
08D	High	50	453	7.81	6.20	12.00	11.40	0.21	36.30
	Medium		378	6.56	5.22	11.90	11.30	0.18	26.20
	Low		260	4.50	3.60	11.90	11.30	0.12	13.10
10D	High	50	567	9.68	7.74	12.10	11.40	0.26	31.90
	Medium		472	8.02	6.44	12.00	11.50	0.22	22.40
	Low		326	5.56	4.48	11.90	11.40	0.15	11.40
12D	High	50	635	10.40	8.44	12.40	11.70	0.28	21.60
	Medium		529	8.39	6.93	12.60	11.90	0.23	14.50
	Low		365	6.04	4.94	12.20	11.60	0.16	7.90

NOTE: Air Conditions: EDB/EWB 24.4/17.2°C *

Water Conditions: EWT/LWT 5.5/14.4°C

ΔT: 8.9°C

42MELD SERIES EXPOSED DECORATIVE FCU WITH CABINET

Model MELD	Speed	ESP (Pa)	Air Flow (L/S)	Capacity (KW)		Air Off FCU (°C)		Water Flow (L/S)	Water Pressure Drop (kPa)
				Total	Sensible	DB	WB		
02E	High	50	98	1.55	1.28	12.60	11.90	0.04	5.60
	Medium		90	1.42	1.17	12.60	11.90	0.04	5.10
	Low		63	1.11	0.85	12.10	11.20	0.03	3.80
03E	High	50	198	2.78	2.43	13.30	12.50	0.08	8.20
	Medium		165	2.38	2.07	13.10	12.40	0.06	3.60
	Low		114	1.94	1.56	12.10	11.50	0.05	2.80
04E	High	50	227	3.41	2.91	12.80	12.20	0.09	11.40
	Medium		189	2.94	2.46	12.60	12.00	0.08	8.60
	Low		130	2.10	1.73	12.40	11.80	0.06	2.90
06E	High	50	340	6.02	4.78	11.70	11.20	0.16	40.50
	Medium		283	5.06	4.02	11.60	11.10	0.14	29.20
	Low		195	3.48	2.77	11.60	11.10	0.09	14.50
08E	High	50	453	7.81	6.20	12.00	11.40	0.21	36.30
	Medium		378	6.56	5.22	11.90	11.30	0.18	26.20
	Low		260	4.50	3.60	11.90	11.30	0.12	13.10
10E	High	50	567	9.68	7.74	12.10	11.40	0.26	31.90
	Medium		472	8.02	6.44	12.00	11.50	0.22	22.40
	Low		326	5.56	4.48	11.90	11.40	0.15	11.40
12E	High	50	635	10.40	8.44	12.40	11.70	0.28	21.60
	Medium		529	8.39	6.93	12.60	11.90	0.23	14.50
	Low		365	6.04	4.94	12.20	11.60	0.16	7.90

NOTE: Air Conditions: EDB/EWB 24.4/17.2°C *

Water Conditions: EWT/LWT 5.5/14.4°C

ΔT: 8.9°C

- - For other design conditions, please apply the selection program to finalize your applications - -

PERFORMANCE RATING

42MEH SERIES HIGH STATIC DUCTED FCU WITH PLENUM

Model MEH-	Speed	ESP (Pa)	Air Flow (L/S)	Capacity (KW)		Air Off FCU (°C)		Water Flow (L/S)	Water Pressure Drop (kPa)
				Total	Sensible	DB	WB		
06S	High	50	303	3.66	3.38	14.30	13.30	0.16	5.40
	Medium		272	3.22	3.02	14.40	13.30	0.14	4.20
	Low		217	2.76	2.52	13.90	13.00	0.12	3.20
08S	High	50	378	5.18	4.60	13.40	12.70	0.22	10.60
	Medium		301	3.88	3.54	13.80	13.00	0.17	6.20
	Low		240	3.23	2.87	13.60	12.80	0.14	4.40
10S	High	50	472	6.28	5.57	13.70	12.80	0.27	7.30
	Medium		378	4.81	4.35	14.00	13.00	0.21	4.50
	Low		301	3.93	3.51	13.90	12.90	0.17	3.10
12S	High	50	538	7.31	6.41	13.60	12.70	0.31	8.10
	Medium		486	6.44	5.71	13.80	12.80	0.27	6.40
	Low		361	4.65	4.15	14.00	13.00	0.20	3.50
14S	High	50	660	9.19	8.14	13.30	12.60	0.39	12.60
	Medium		611	8.26	7.41	13.40	12.70	0.35	10.40
	Low		422	5.45	4.95	13.80	13.00	0.23	4.80
16S	High	50	788	10.49	9.26	13.80	12.80	0.45	6.60
	Medium		698	8.87	7.97	14.10	13.00	0.38	4.80
	Low		539	6.60	6.01	14.30	13.20	0.28	2.80
18S	High	50	849	11.88	10.31	13.40	12.60	0.51	8.70
	Medium		772	10.55	9.20	13.60	12.70	0.45	7.00
	Low		661	8.60	7.61	14.00	12.90	0.37	4.80
20S	High	50	939	14.16	11.96	12.90	12.20	0.60	13.80
	Medium		864	12.94	10.96	12.90	12.20	0.55	11.60
	Low		663	9.56	8.18	13.20	12.40	0.41	6.60
24S	High	50	1122	16.34	14.16	13.00	12.40	0.70	18.60
	Medium		1046	15.12	13.12	13.10	12.40	0.64	16.10
	Low		718	9.27	8.35	13.90	13.00	0.40	6.50
30S	High	50	1510	20.52	18.35	13.40	12.70	0.87	31.50
	Medium		1392	18.76	16.82	13.50	12.80	0.80	26.50
	Low		1044	12.40	11.59	14.40	13.30	0.53	12.20

Note: Air Conditions: EDB/EWB 24.4/17.2°C

Water Conditions: EWT/LWT 7.2/12.8°C

ΔT: 5.6°C.

42MEH SERIES HIGH STATIC DOUBLE SKIN DUCTED FCU WITH PLENUM

Model MEH-	Speed	ESP (Pa)	Air Flow (L/S)	Capacity (KW)		Air Off FCU (°C)		Water Flow (L/S)	Water Pressure Drop (kPa)
				Total	Sensible	DB	WB		
06D	High	50	303	3.66	3.38	14.30	13.30	0.16	5.40
	Medium		272	3.22	3.02	14.40	13.30	0.14	4.20
	Low		217	2.76	2.52	13.90	13.00	0.12	3.20
08D	High	50	378	5.18	4.60	13.40	12.70	0.22	10.60
	Medium		301	3.88	3.54	13.80	13.00	0.17	6.20
	Low		240	3.23	2.87	13.60	12.80	0.14	4.40
10D	High	50	472	6.28	5.57	13.70	12.80	0.27	7.30
	Medium		378	4.81	4.35	14.00	13.00	0.21	4.50
	Low		301	3.93	3.51	13.90	12.90	0.17	3.10
12D	High	50	538	7.31	6.41	13.60	12.70	0.31	8.10
	Medium		486	6.44	5.71	13.80	12.80	0.27	6.40
	Low		361	4.65	4.15	14.00	13.00	0.20	3.50
14D	High	50	660	9.19	8.14	13.30	12.60	0.39	12.60
	Medium		611	8.26	7.41	13.40	12.70	0.35	10.40
	Low		422	5.45	4.95	13.80	13.00	0.23	4.80
16D	High	50	788	10.49	9.26	13.80	12.80	0.45	6.60
	Medium		698	8.87	7.97	14.10	13.00	0.38	4.80
	Low		539	6.60	6.01	14.30	13.20	0.28	2.80
18D	High	50	849	11.88	10.31	13.40	12.60	0.51	8.70
	Medium		772	10.55	9.20	13.60	12.70	0.45	7.00
	Low		661	8.60	7.61	14.00	12.90	0.37	4.80
20D	High	50	939	14.16	11.96	12.90	12.20	0.60	13.80
	Medium		864	12.94	10.96	12.90	12.20	0.55	11.60
	Low		663	9.56	8.18	13.20	12.40	0.41	6.60
24D	High	50	1122	16.34	14.16	13.00	12.40	0.70	18.60
	Medium		1046	15.12	13.12	13.10	12.40	0.64	16.10
	Low		718	9.27	8.35	13.90	13.00	0.40	6.50
30D	High	50	1510	20.52	18.35	13.40	12.70	0.87	31.50
	Medium		1392	18.76	16.82	13.50	12.80	0.80	26.50
	Low		1044	12.40	11.59	14.40	13.30	0.53	12.20

Note: Air Conditions: EDB/EWB 24.4/17.2°C

Water Conditions: EWT/LWT 7.2/12.8°C

ΔT: 5.6°C.

- - For other design conditions, please apply the selection program to finalize your applications - -



PERFORMANCE RATING

42MEH SERIES EXPOSED DECORATIVE FCU WITH CABINET

Model MEH-	Speed	ESP (Pa)	Air Flow (L/S)	Capacity (KW)		Air Off FCU (°C)		Water Flow (L/S)	Water Pressure Drop (kPa)
				Total	Sensible	DB	WB		
06E	High	50	303	3.66	3.38	14.30	13.30	0.16	5.40
	Medium		272	3.22	3.02	14.40	13.30	0.14	4.20
	Low		217	2.76	2.52	13.90	13.00	0.12	3.20
08E	High	50	378	5.18	4.60	13.40	12.70	0.22	10.60
	Medium		301	3.88	3.54	13.80	13.00	0.17	6.20
	Low		240	3.23	2.87	13.60	12.80	0.14	4.40
10E	High	50	472	6.28	5.57	13.70	12.80	0.27	7.30
	Medium		378	4.81	4.35	14.00	13.00	0.21	4.50
	Low		301	3.93	3.51	13.90	12.90	0.17	3.10
12E	High	50	538	7.31	6.41	13.60	12.70	0.31	8.10
	Medium		486	6.44	5.71	13.80	12.80	0.27	6.40
	Low		361	4.65	4.15	14.00	13.00	0.20	3.50
14E	High	50	660	9.19	8.14	13.30	12.60	0.39	12.60
	Medium		611	8.26	7.41	13.40	12.70	0.35	10.40
	Low		422	5.45	4.95	13.80	13.00	0.23	4.80
16E	High	50	788	10.49	9.26	13.80	12.80	0.45	6.60
	Medium		698	8.87	7.97	14.10	13.00	0.38	4.80
	Low		539	6.60	6.01	14.30	13.20	0.28	2.80
18E	High	50	849	11.88	10.31	13.40	12.60	0.51	8.70
	Medium		772	10.55	9.20	13.60	12.70	0.45	7.00
	Low		661	8.60	7.61	14.00	12.90	0.37	4.80
20E	High	50	939	14.16	11.96	12.90	12.20	0.60	13.80
	Medium		864	12.94	10.96	12.90	12.20	0.55	11.60
	Low		663	9.56	8.18	13.20	12.40	0.41	6.60
24E	High	50	1122	16.34	14.16	13.00	12.40	0.70	18.60
	Medium		1046	15.12	13.12	13.10	12.40	0.64	16.10
	Low		718	9.27	8.35	13.90	13.00	0.40	6.50
30E	High	50	1510	20.52	18.35	13.40	12.70	0.87	31.50
	Medium		1392	18.76	16.82	13.50	12.80	0.80	26.50
	Low		1044	12.40	11.59	14.40	13.30	0.53	12.20

Note: Air Conditions: EDB/EWB 24.4/17.2°C

Water Conditions: EWT/LWT 7.2/12.8°C

ΔT: 5.6°C.

42MEHD SERIES HIGH STATIC DUCTED FCU WITH PLENUM

Model MEHD	Speed	ESP (Pa)	Air Flow (L/S)	Capacity (KW)		Air Off FCU (°C)		Water Flow (L/S)	Water Pressure Drop (kPa)
				Total	Sensible	DB	WB		
06S	High	50	282	5.42	4.21	10.90	10.60	0.15	20.70
	Medium		227	4.22	3.32	11.20	10.80	0.11	13.00
	Low		180	3.36	2.63	11.20	10.80	0.09	8.50
08S	High	50	378	6.89	5.42	11.40	11.00	0.19	16.00
	Medium		303	5.26	4.23	11.80	11.30	0.14	9.70
	Low		242	4.32	3.41	11.60	11.10	0.12	6.70
10S	High	50	472	8.52	6.74	11.50	11.10	0.23	15.10
	Medium		378	6.50	5.24	11.90	11.40	0.17	9.10
	Low		301	5.30	4.21	11.70	11.20	0.14	6.30
12S	High	50	565	9.72	7.82	11.90	11.40	0.26	13.50
	Medium		496	8.14	6.67	12.20	11.70	0.22	9.70
	Low		361	6.08	4.92	12.10	11.50	0.16	5.70
14S	High	50	659	11.71	9.34	11.60	11.20	0.31	13.90
	Medium		616	10.77	8.65	11.70	11.30	0.29	11.90
	Low		422	7.26	5.86	11.80	11.40	0.20	5.70
16S	High	50	754	14.05	10.92	11.30	10.80	0.38	20.60
	Medium		703	13.08	10.20	11.30	10.80	0.35	18.00
	Low		483	8.44	6.74	11.80	11.30	0.23	8.00
18S	High	50	848	15.90	12.34	11.30	10.80	0.43	15.10
	Medium		776	14.39	11.23	11.30	10.90	0.39	12.50
	Low		661	11.72	9.30	11.70	11.20	0.31	8.60
20S	High	50	944	16.61	13.31	11.70	11.20	0.45	13.80
	Medium		869	14.78	12.01	11.90	11.40	0.40	11.10
	Low		677	11.25	9.19	12.10	11.60	0.30	6.70
24S	High	50	1124	21.50	16.53	11.10	10.60	0.58	23.70
	Medium		1041	19.91	15.32	11.10	10.60	0.53	20.50
	Low		781	13.95	11.03	11.60	11.10	0.37	10.60
30S	High	50	1520	26.63	20.90	12.00	11.30	0.71	73.70
	Medium		1402	24.62	19.31	11.90	11.30	0.66	63.40
	Low		1051	17.36	13.93	12.40	11.60	0.47	32.70

NOTE: Air Conditions: EDB/EWB 24.4/17.2°C *

Water Conditions: EWT/LWT 5.5/14.4°C

ΔT: 8.9°C

- - For other design conditions, please apply the selection program to finalize your applications - -



PERFORMANCE RATING

42MEHD SERIES HIGH STATIC DOUBLE SKIN DUCTED FCU WITH PLENUM

Model MEHD	Speed	ESP (Pa)	Air Flow (L/S)	Capacity (KW)		Air Off FCU (°C)		Water Flow (L/S)	Water Pressure Drop (kPa)
				Total	Sensible	DB	WB		
06D	High	50	282	5.42	4.21	10.90	10.60	0.15	20.70
	Medium		227	4.22	3.32	11.20	10.80	0.11	13.00
	Low		180	3.36	2.63	11.20	10.80	0.09	8.50
08D	High	50	378	6.89	5.42	11.40	11.00	0.19	16.00
	Medium		303	5.26	4.23	11.80	11.30	0.14	9.70
	Low		242	4.32	3.41	11.60	11.10	0.12	6.70
10D	High	50	472	8.52	6.74	11.50	11.10	0.23	15.10
	Medium		378	6.50	5.24	11.90	11.40	0.17	9.10
	Low		301	5.30	4.21	11.70	11.20	0.14	6.30
12D	High	50	565	9.72	7.82	11.90	11.40	0.26	13.50
	Medium		496	8.14	6.67	12.20	11.70	0.22	9.70
	Low		361	6.08	4.92	12.10	11.50	0.16	5.70
14D	High	50	659	11.71	9.34	11.60	11.20	0.31	13.90
	Medium		616	10.77	8.65	11.70	11.30	0.29	11.90
	Low		422	7.26	5.86	11.80	11.40	0.20	5.70
16D	High	50	754	14.05	10.92	11.30	10.80	0.38	20.60
	Medium		703	13.08	10.20	11.30	10.80	0.35	18.00
	Low		483	8.44	6.74	11.80	11.30	0.23	8.00
18D	High	50	848	15.90	12.34	11.30	10.80	0.43	15.10
	Medium		776	14.39	11.23	11.30	10.90	0.39	12.50
	Low		661	11.72	9.30	11.70	11.20	0.31	8.60
20D	High	50	944	16.61	13.31	11.70	11.20	0.45	13.80
	Medium		869	14.78	12.01	11.90	11.40	0.40	11.10
	Low		677	11.25	9.19	12.10	11.60	0.30	6.70
24D	High	50	1124	21.50	16.53	11.10	10.60	0.58	23.70
	Medium		1041	19.91	15.32	11.10	10.60	0.53	20.50
	Low		781	13.95	11.03	11.60	11.10	0.37	10.60
30D	High	50	1520	26.63	20.90	12.00	11.30	0.71	73.70
	Medium		1402	24.62	19.31	11.90	11.30	0.66	63.40
	Low		1051	17.36	13.93	12.40	11.60	0.47	32.70

NOTE: Air Conditions: EDB/EWB 24.4/17.2°C *

Water Conditions: EWT/LWT 5.5/14.4°C

ΔT: 8.9°C

42MEHD SERIES EXPOSED DECORATIVE FCU WITH CABINET

Model MEHD	Speed	ESP (Pa)	Air Flow (L/S)	Capacity (KW)		Air Off FCU (°C)		Water Flow (L/S)	Water Pressure Drop (kPa)
				Total	Sensible	DB	WB		
06E	High	50	282	5.42	4.21	10.90	10.60	0.15	20.70
	Medium		227	4.22	3.32	11.20	10.80	0.11	13.00
	Low		180	3.36	2.63	11.20	10.80	0.09	8.50
08E	High	50	378	6.89	5.42	11.40	11.00	0.19	16.00
	Medium		303	5.26	4.23	11.80	11.30	0.14	9.70
	Low		242	4.32	3.41	11.60	11.10	0.12	6.70
10E	High	50	472	8.52	6.74	11.50	11.10	0.23	15.10
	Medium		378	6.50	5.24	11.90	11.40	0.17	9.10
	Low		301	5.30	4.21	11.70	11.20	0.14	6.30
12E	High	50	565	9.72	7.82	11.90	11.40	0.26	13.50
	Medium		496	8.14	6.67	12.20	11.70	0.22	9.70
	Low		361	6.08	4.92	12.10	11.50	0.16	5.70
14E	High	50	659	11.71	9.34	11.60	11.20	0.31	13.90
	Medium		616	10.77	8.65	11.70	11.30	0.29	11.90
	Low		422	7.26	5.86	11.80	11.40	0.20	5.70
16E	High	50	754	14.05	10.92	11.30	10.80	0.38	20.60
	Medium		703	13.08	10.20	11.30	10.80	0.35	18.00
	Low		483	8.44	6.74	11.80	11.30	0.23	8.00
18E	High	50	848	15.90	12.34	11.30	10.80	0.43	15.10
	Medium		776	14.39	11.23	11.30	10.90	0.39	12.50
	Low		661	11.72	9.30	11.70	11.20	0.31	8.60
20E	High	50	944	16.61	13.31	11.70	11.20	0.45	13.80
	Medium		869	14.78	12.01	11.90	11.40	0.40	11.10
	Low		677	11.25	9.19	12.10	11.60	0.30	6.70
24E	High	50	1124	21.50	16.53	11.10	10.60	0.58	23.70
	Medium		1041	19.91	15.32	11.10	10.60	0.53	20.50
	Low		781	13.95	11.03	11.60	11.10	0.37	10.60
30E	High	50	1520	26.63	20.90	12.00	11.30	0.71	73.70
	Medium		1402	24.62	19.31	11.90	11.30	0.66	63.40
	Low		1051	17.36	13.93	12.40	11.60	0.47	32.70

NOTE: Air Conditions: EDB/EWB 24.4/17.2°C *

Water Conditions: EWT/LWT 5.5/14.4°C

ΔT: 8.9°C

- - For other design conditions, please apply the selection program to finalize your applications - -

ELECTRICAL DATA

42MEL SERIES LOW STATIC DUCTED, DOUBLE SKIN DUCTED & DECORATIVE FCUs WITH PLENUM

MOTOR DATA:

Model	Unit Size	Power Supply (V-Ph-Hz)	Speed	Fan Speed (rpm)	Power Factor	No. of Poles	Nominal Power Output (W)	Power Input (W)	Running Amps	Remark
MEL	02	220/240-1-50	High	1400	0.95	4	50	115	0.50	* Total motor amps and watts values are shown for units with 2 motors (Size 008 to 012).
			Medium	1330				105	0.46	
			Low	1150				90	0.39	
	03		High	1400	0.95	4	80	181	0.79	
			Medium	1330				145	0.63	
			Low	1150				121	0.53	
	04		High	1400	0.95	4	80	183	0.80	
			Medium	1330				147	0.64	
			Low	1150				123	0.53	
	06		High	1400	0.95	4	80	220	0.82	
			Medium	1330				170	0.74	
			Low	1150				140	0.61	
	08		High	1400	0.95	4	80Wx1No.+ 50W x 1No.	330	1.43	
			Medium	1330				260	1.13	
			Low	1150				235	1.02	
	10		High	1400	0.95	4	80W x 2 Nos.	355	1.54	
			Medium	1330				273	1.19	
			Low	1150				240	1.04	
	12		High	1400	0.95	4	80W x 2 Nos.	363	1.58	
			Medium	1330				302	1.31	
			Low	1150				242	1.05	

42MELD SERIES LOW STATIC DUCTED, DOUBLE SKIN DUCTED & DECORATIVE FCUs WITH PLENUM

MOTOR DATA:

Model	Unit Size	Power Supply (V-Ph-Hz)	Speed	Fan Speed (rpm)	Power Factor	No. of Poles	Nominal Power Output (W)	Power Input (W)	Running Amps	Remark
MELD	02	220/240-1-50	High	1400	0.95	4	50	115	0.50	* Total motor amps and watts values are shown for units with 2 motors (Size 008 to 012).
			Medium	1330				105	0.46	
			Low	1150				90	0.39	
	03		High	1400	0.95	4	80	181	0.79	
			Medium	1330				145	0.63	
			Low	1150				121	0.53	
	04		High	1400	0.95	4	80	183	0.80	
			Medium	1330				147	0.64	
			Low	1150				123	0.53	
	06		High	1400	0.95	4	80	220	0.82	
			Medium	1330				170	0.74	
			Low	1150				140	0.61	
	08		High	1400	0.95	4	80Wx1No.+ 50W x 1No.	330	1.43	
			Medium	1330				260	1.13	
			Low	1150				235	1.02	
	10		High	1400	0.95	4	80W x 2 Nos.	355	1.54	
			Medium	1330				273	1.19	
			Low	1150				240	1.04	
	12		High	1400	0.95	4	80W x 2 Nos.	363	1.58	
			Medium	1330				302	1.31	
			Low	1150				242	1.05	

Note: Motor nameplate amps may vary.

ELECTRICAL DATA

42MEH SERIES HIGH STATIC DUCTED & DOUBLE SKIN DUCTED & DECORATIVE FCUs WITH PLENUM

MOTOR DATA:

Model	Unit Size	Power Supply (V-Ph-Hz)	Speed	Nominal Fan Speed (rpm)	Power Factor	No. of Poles	Nominal Power Output (W)	Power Input (W)	Running Amps	Remark
MEH	06	220/240-1-50	High	1350	0.95	4	100	231	1.00	
			Medium	1250				185	0.80	
			Low	1000				148	0.64	
	08		High	1350	0.95	4	150	312	1.36	
			Medium	1250				250	1.09	
			Low	1000				200	0.87	
	10		High	1350	0.95	4	200	425	1.85	
			Medium	1250				340	1.48	
			Low	1000				272	1.18	
	12		High	1350	0.95	4	250	545	2.37	
			Medium	1250				420	1.83	
			Low	1000				336	1.46	
	14		High	1350	0.95	4	300	605	2.63	
			Medium	1250				480	2.09	
			Low	1000				396	1.72	
	16		High	1350	0.95	4	300	626	2.72	
			Medium	1250				501	2.18	
			Low	1000				400	1.74	
	18		High	1350	0.95	4	400	681	2.96	
			Medium	1250				545	2.37	
			Low	1000				436	1.90	
	20		High	1350	0.95	4	500	833	3.62	
			Medium	1250				645	2.80	
			Low	1000				550	2.39	
	24		High	1350	0.95	4	500	1000	4.35	
			Medium	1250				840	3.65	
			Low	1000				672	2.92	
30	High	1350	0.95	4	500Wx1 No.+ 250Wx1 No.	1500	6.52			
	Medium	1250				1260	5.48			
	Low	1000				1008	4.38			

* Total motor amps and watts values are shown for units with 2 motors (size 30).

Note: Motor nameplate amps may vary.

ELECTRICAL DATA

42MEHD SERIES HIGH STATIC DUCTED & DOUBLE SKIN DUCTED & DECORATIVE FCUs WITH PLENUM

MOTOR DATA:

Model	Unit Size	Power Supply (V-Ph-Hz)	Speed	Nominal Fan Speed (rpm)	Power Factor	No. of Poles	Nominal Power Output (W)	Power Input (W)	Running Amps	Remark
MEHD	6	220/240-1-50	High	1350	0.95	4	100	231	1.00	
			Medium	1250				185	0.80	
			Low	1000				148	0.64	
	8		High	1350	0.95	4	150	312	1.36	
			Medium	1250				250	1.09	
			Low	1000				200	0.87	
	10		High	1350	0.95	4	200	425	1.85	
			Medium	1250				340	1.48	
			Low	1000				272	1.18	
	12		High	1350	0.95	4	250	525	2.28	
			Medium	1250				420	1.83	
			Low	1000				336	1.46	
	14		High	1350	0.95	4	300	605	2.63	
			Medium	1250				480	2.09	
			Low	1000				396	1.72	
	16		High	1350	0.95	4	300	626	2.72	
			Medium	1250				501	2.18	
			Low	1000				400	1.74	
	18		High	1350	0.95	4	400	681	2.96	
			Medium	1250				545	2.37	
			Low	1000				436	1.90	
	20		High	1350	0.95	4	500	681	2.96	
			Medium	1250				545	2.37	
			Low	1000				436	1.90	
	24		High	1350	0.95	4	500	1050	4.57	
			Medium	1250				840	3.65	
			Low	1000				672	2.92	
30	High	1350	0.95	4	500Wx1 No.+ 250Wx1 No.	1575	6.85			
	Medium	1250				1260	5.48			
	Low	1000				1008	4.38			

* Total motor amps and watts values are shown for units with 2 motors (size 30).

Note: Motor nameplate amps may vary.

EC MOTOR (OPTIONAL FEATURE)

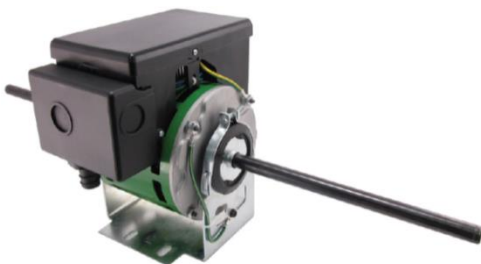
EC motor provides high efficiency and precise airflow control in a 42 frame package. These motor are coming along with inbuilt internal motor controller and BMS connectivity. Our EC motors are flexible mechanical designs integrates into single or dual blowers as well as fan applications.

Key Features and Benefits:

- Available in single and dual shaft configurations.
- Tri-voltage (one model for multiple applications).
- Multiple input options compatible with a wide variety of control systems.
- Fully programmable to the specific application.
- Integrated motor and control.

Specification:

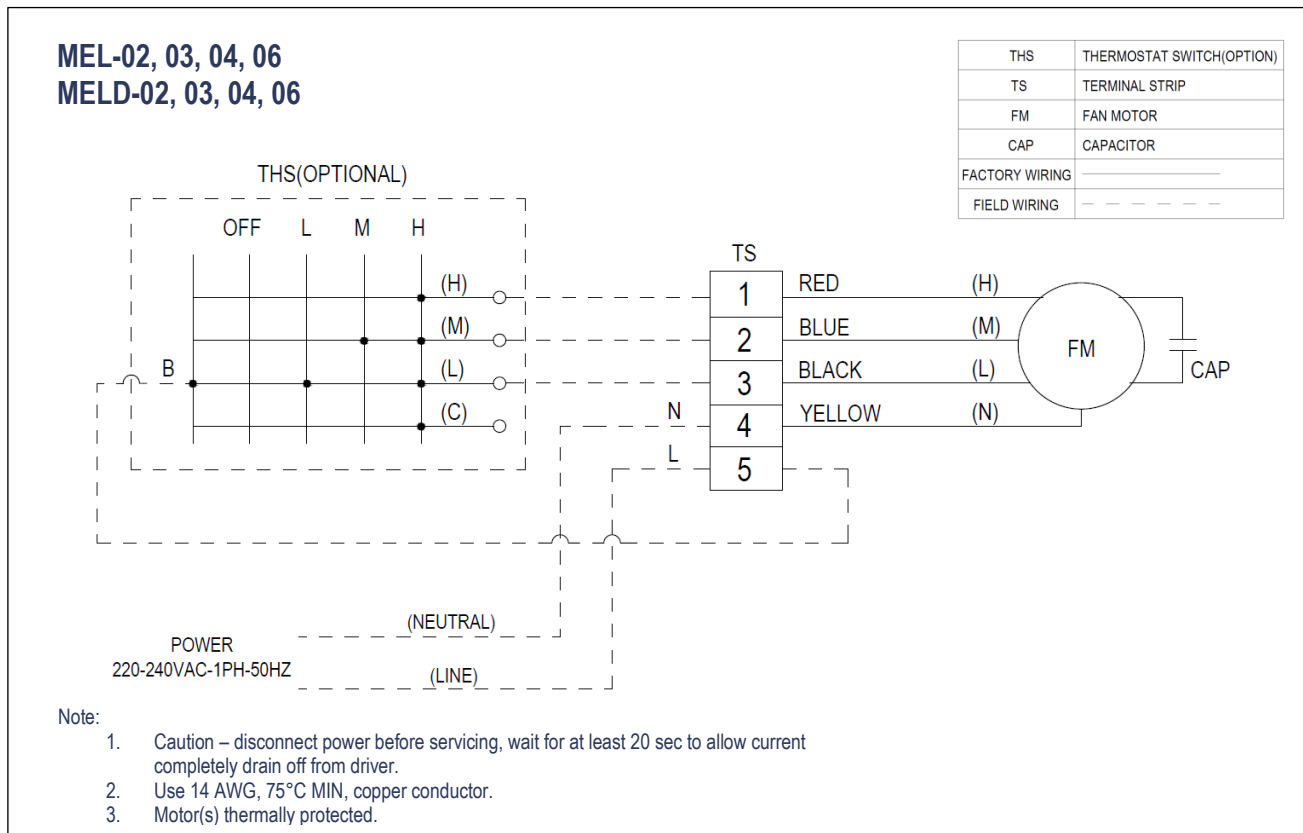
- Horse Power : 1/4 ~ 1/8 HP
- Voltage : 115 / 230 / 277 V (tri-voltage)
- Speeds : 300-1800 RPM, OR 300-1200 RPM
- Inputs : 0-10V, PWM or 3 - 24V Speed Taps
- Operation Modes : Constant Torque, Constant Speed
- Frame : NEMA† 42
- Enclosure : Open Air Over (OAO)
- Efficiency : Up to 80%
- Mounting : Resilient, Stud or Belly Band



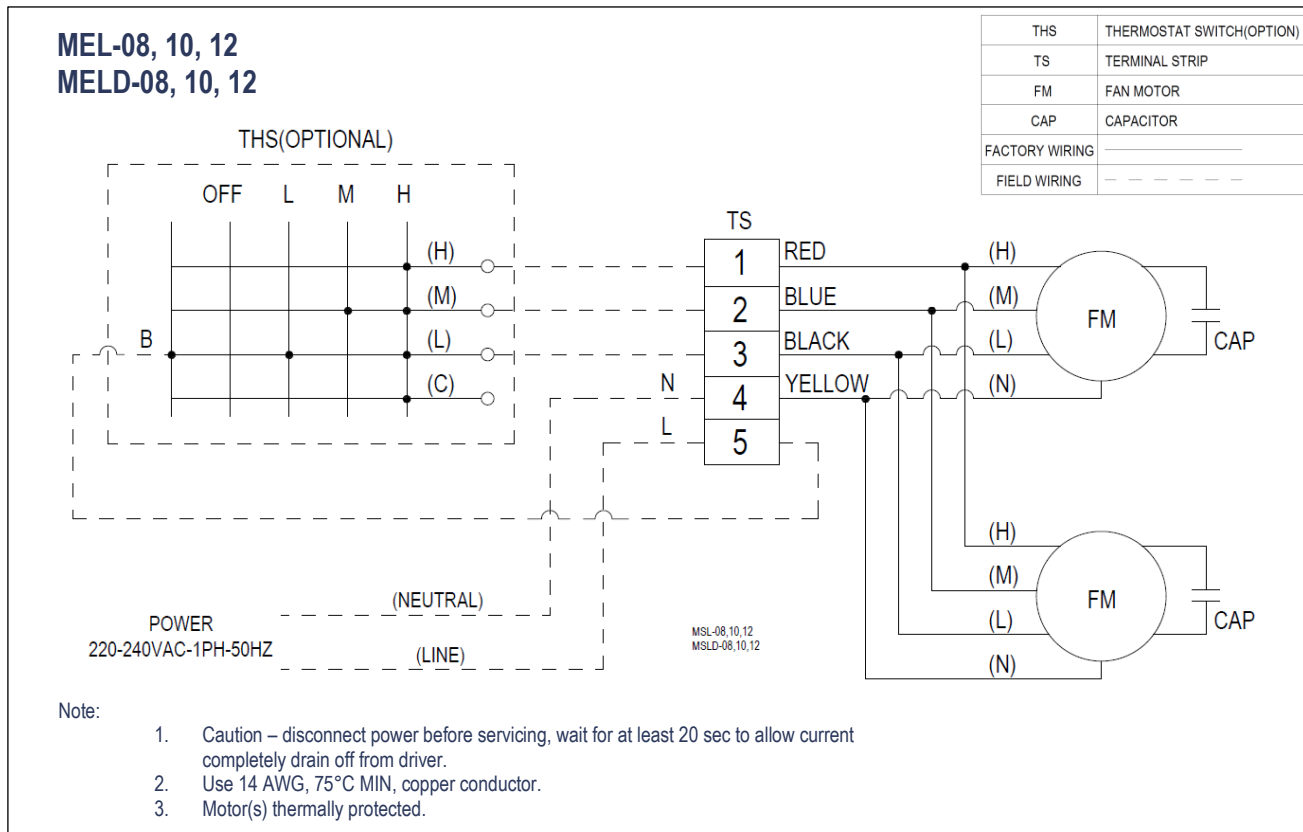
Controller
(Optional)

WIRING DIAGRAM

42MEL/ MELD SERIES LOW STATIC DUCTED, DOUBLE SKIN DUCTED & DECORATIVE FCUs WITH PLENUM SINGLE MOTOR WIRING DIAGRAM (AC MOTOR)

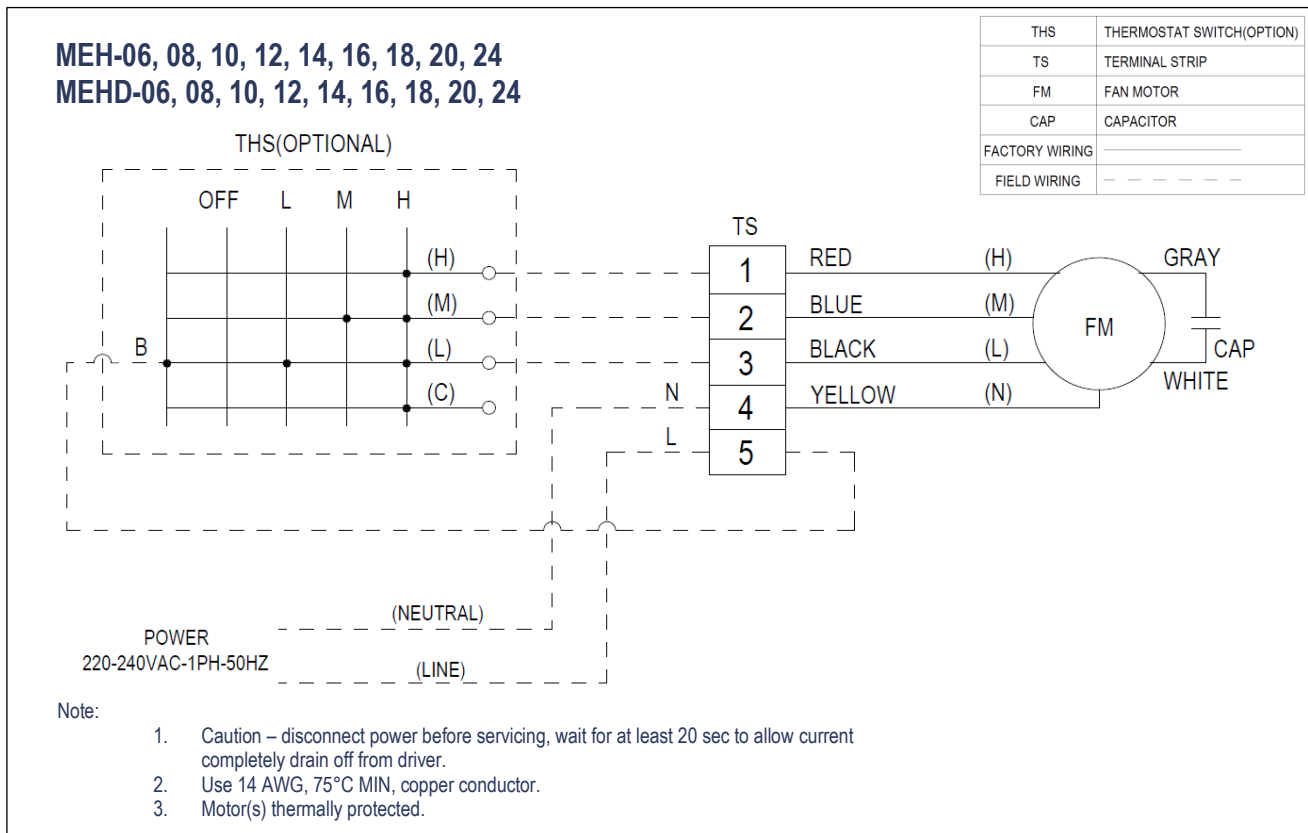


DOUBLE MOTOR WIRING DIAGRAM (AC MOTOR)

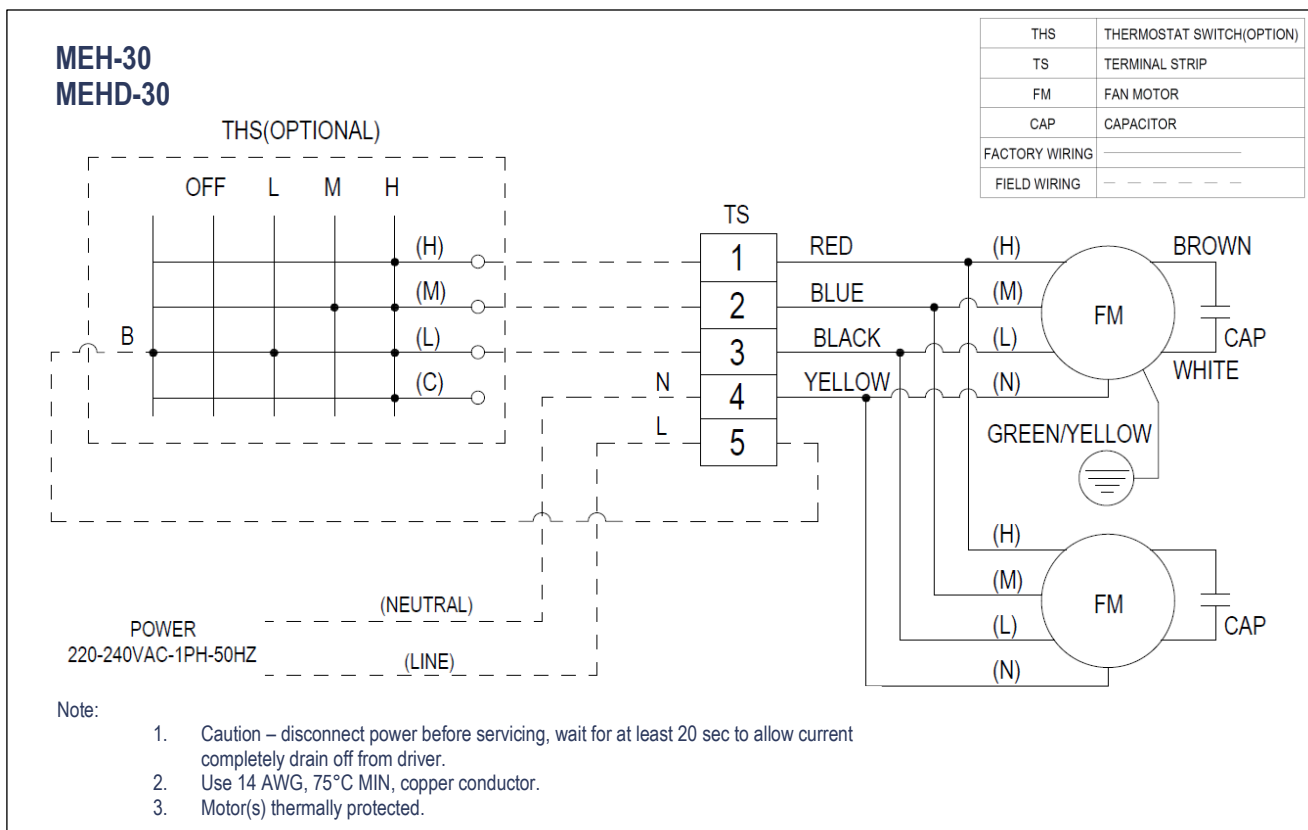


WIRING DIAGRAM

42MEH/ MEHD SERIES HIGH STATIC DCUTED, DOUBLE SKIN DUCTED & DECORATIVE FCUs WITH PLENUM SINGLE MOTOR WIRING DIAGRAM (AC MOTOR)

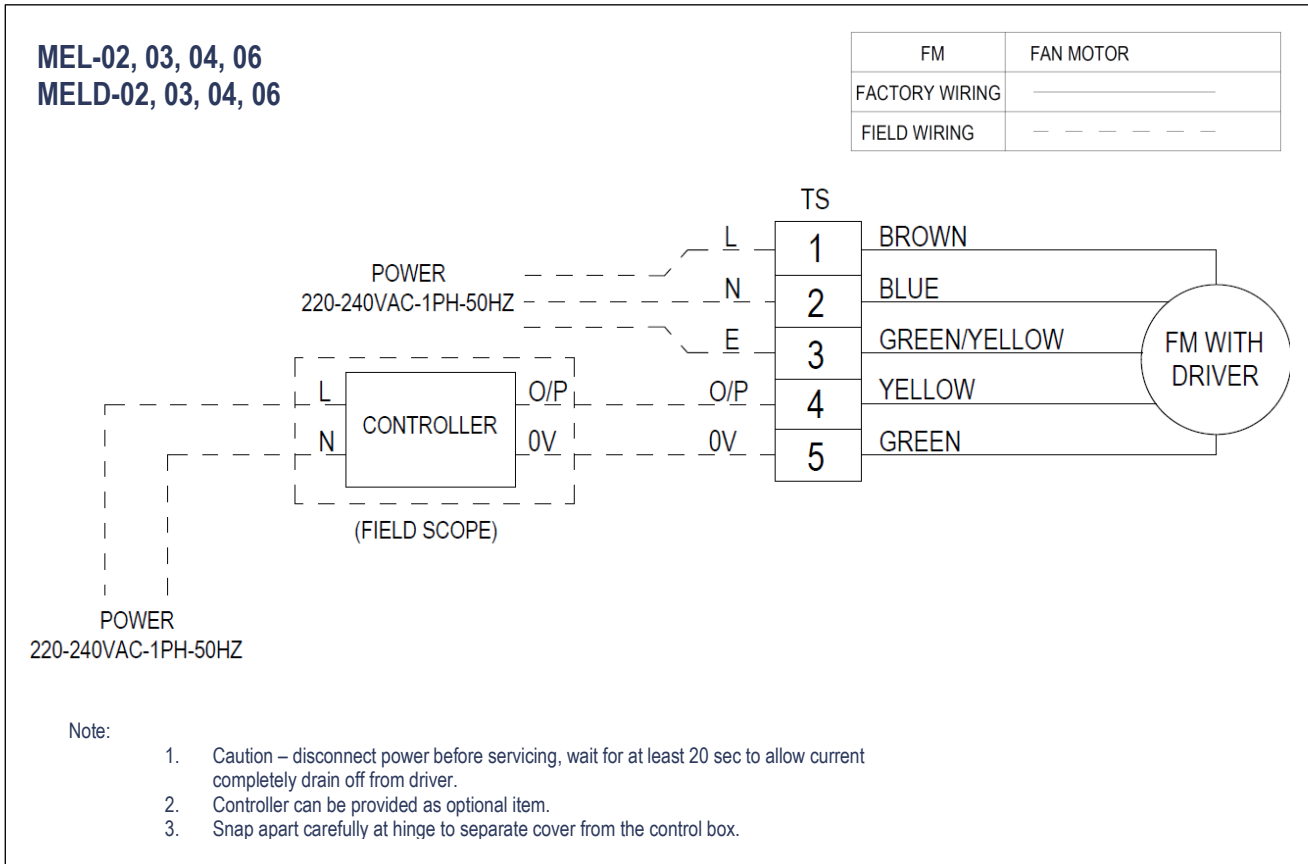


DOUBLE MOTOR WIRING DIAGRAM (AC MOTOR)

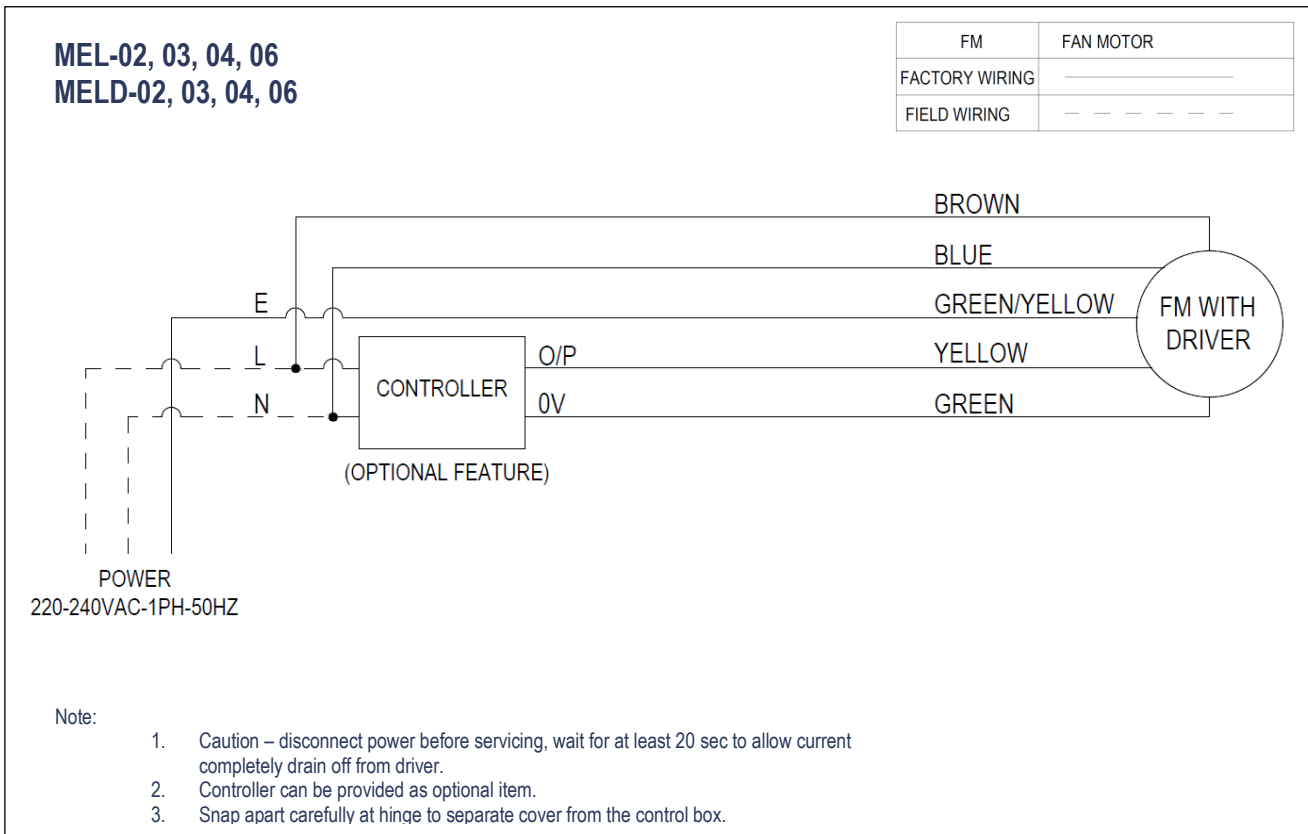


WIRING DIAGRAM

42MEL/ MELD SERIES LOW STATIC DUCTED, DOUBLE SKIN DUCTED & DECORATIVE FCUs WITH PLENUM SINGLE MOTOR WIRING DIAGRAM (EC MOTOR) – WITHOUT CONTROLLER (FIELD SCOPE)

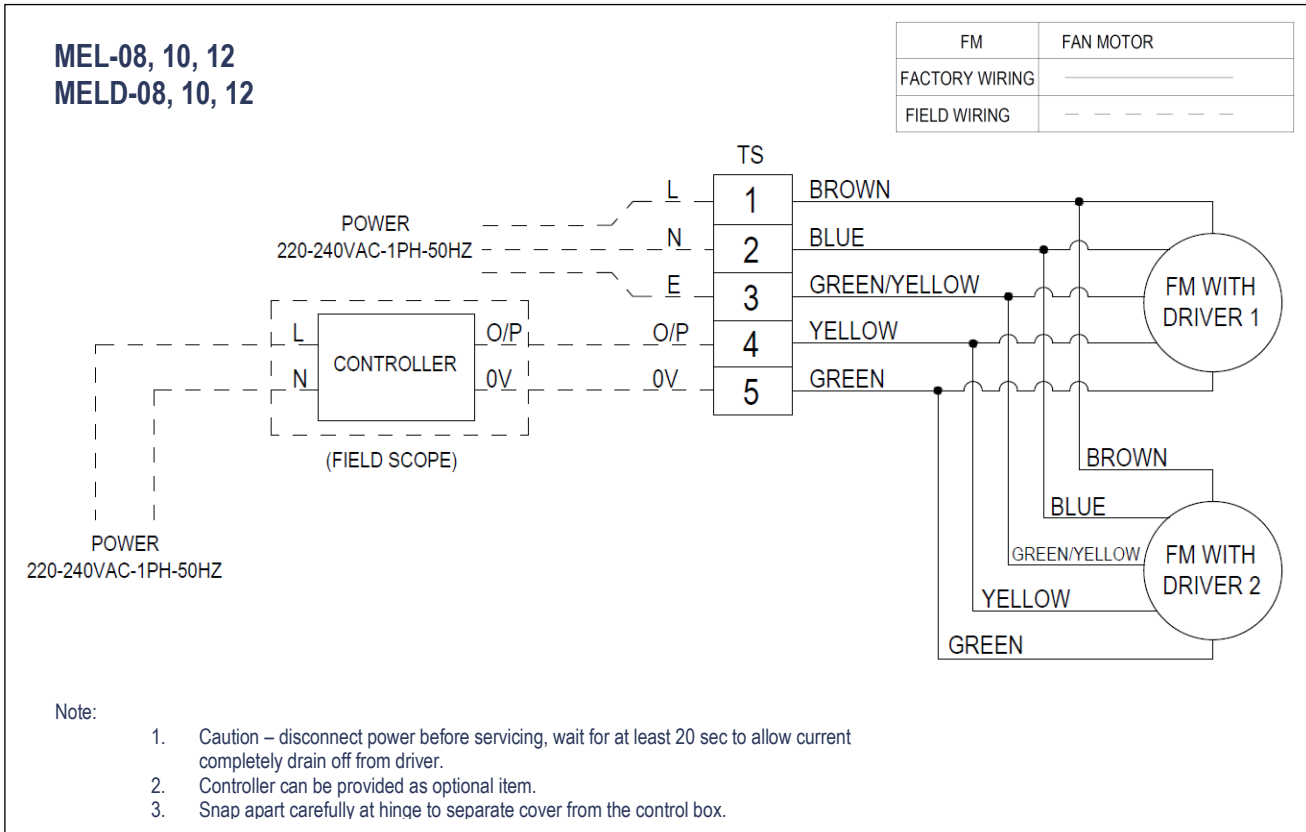


SINGLE MOTOR WIRING DIAGRAM (EC MOTOR) – WITH CONTROLLER (FACTORY ASSEMBLED)

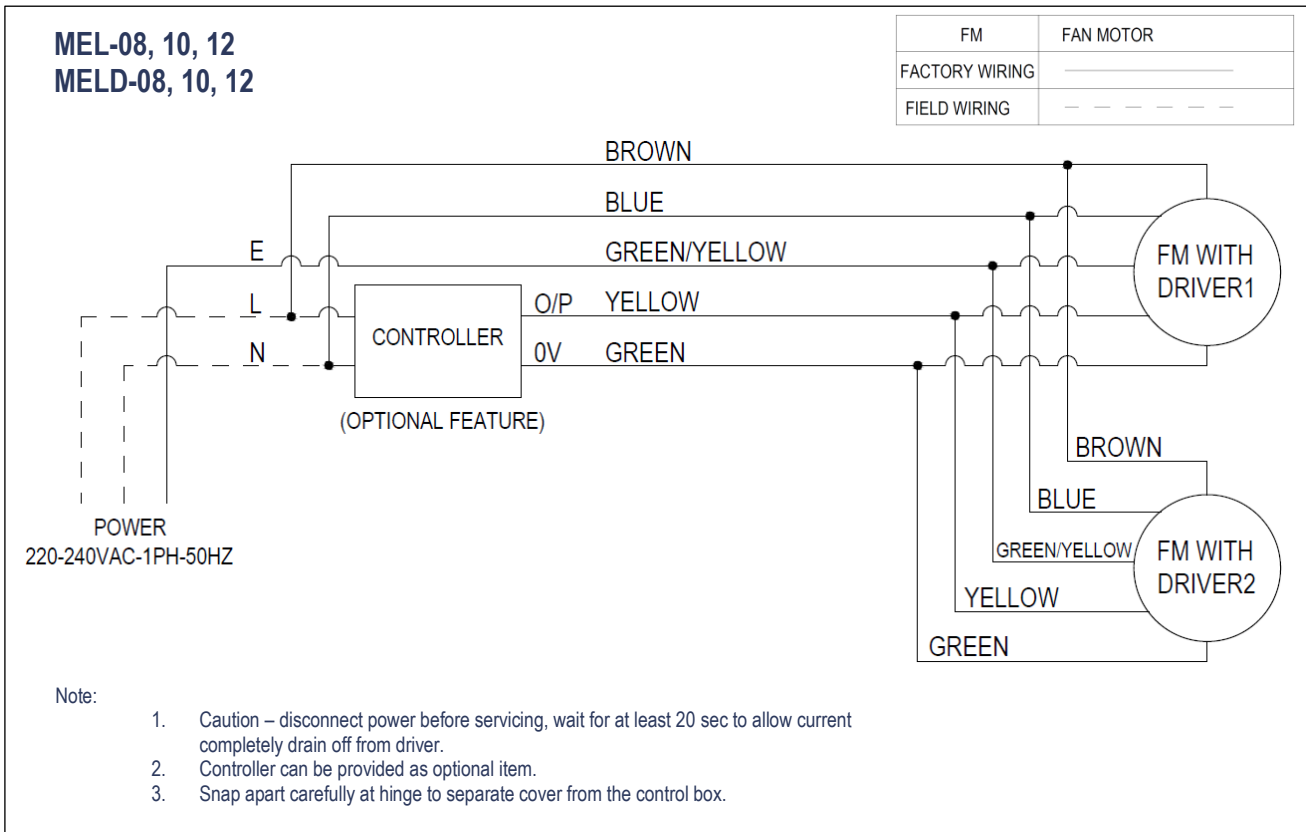


WIRING DIAGRAM

42MEL/ MELD SERIES LOW STATIC DUCTED, DOUBLE SKIN DUCTED & DECORATIVE FCUs WITH PLENUM DOUBLE MOTOR WIRING DIAGRAM (EC MOTOR) – WITHOUT CONTROLLER (FIELD SCOPE)

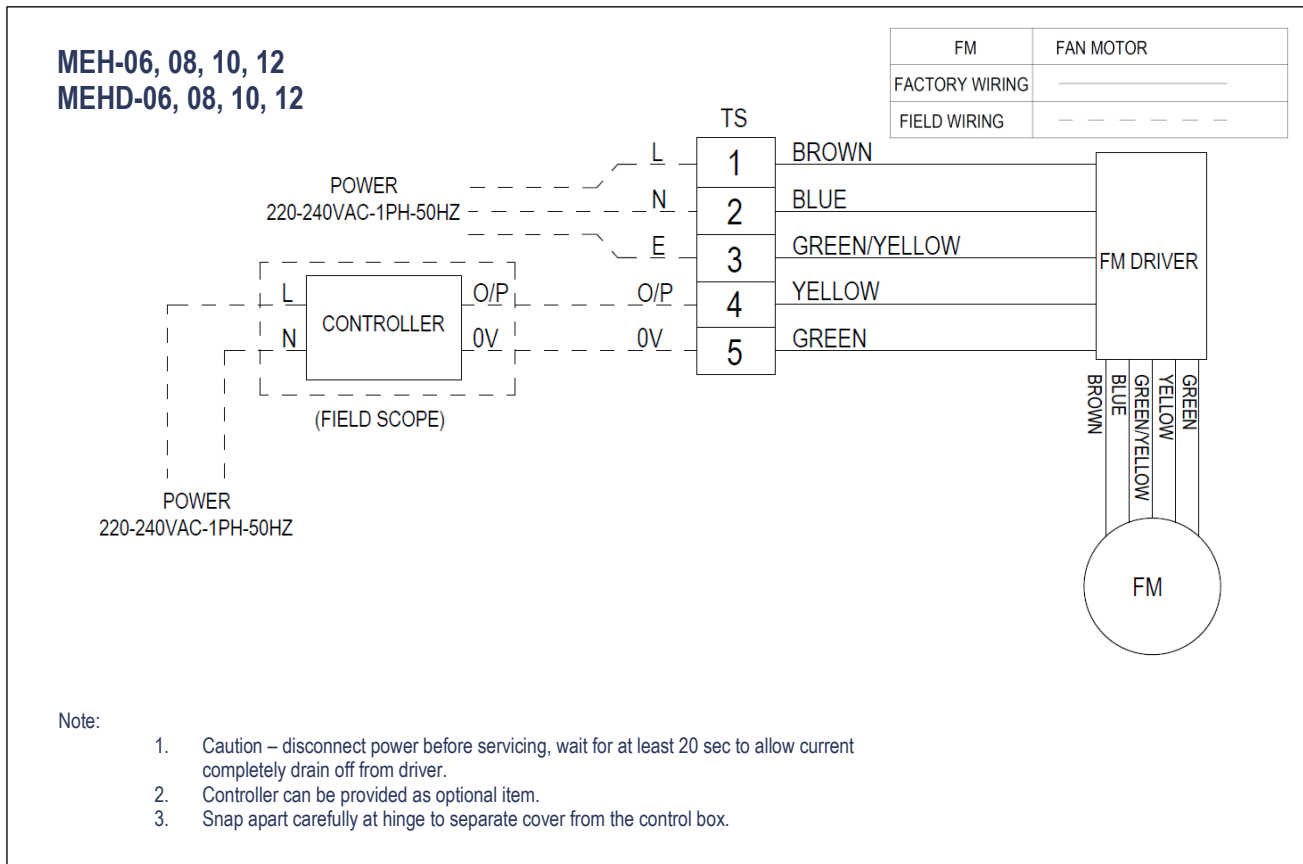


DOUBLE MOTOR WIRING DIAGRAM (EC MOTOR) – WITH CONTROLLER (FACTORY ASSEMBLED)

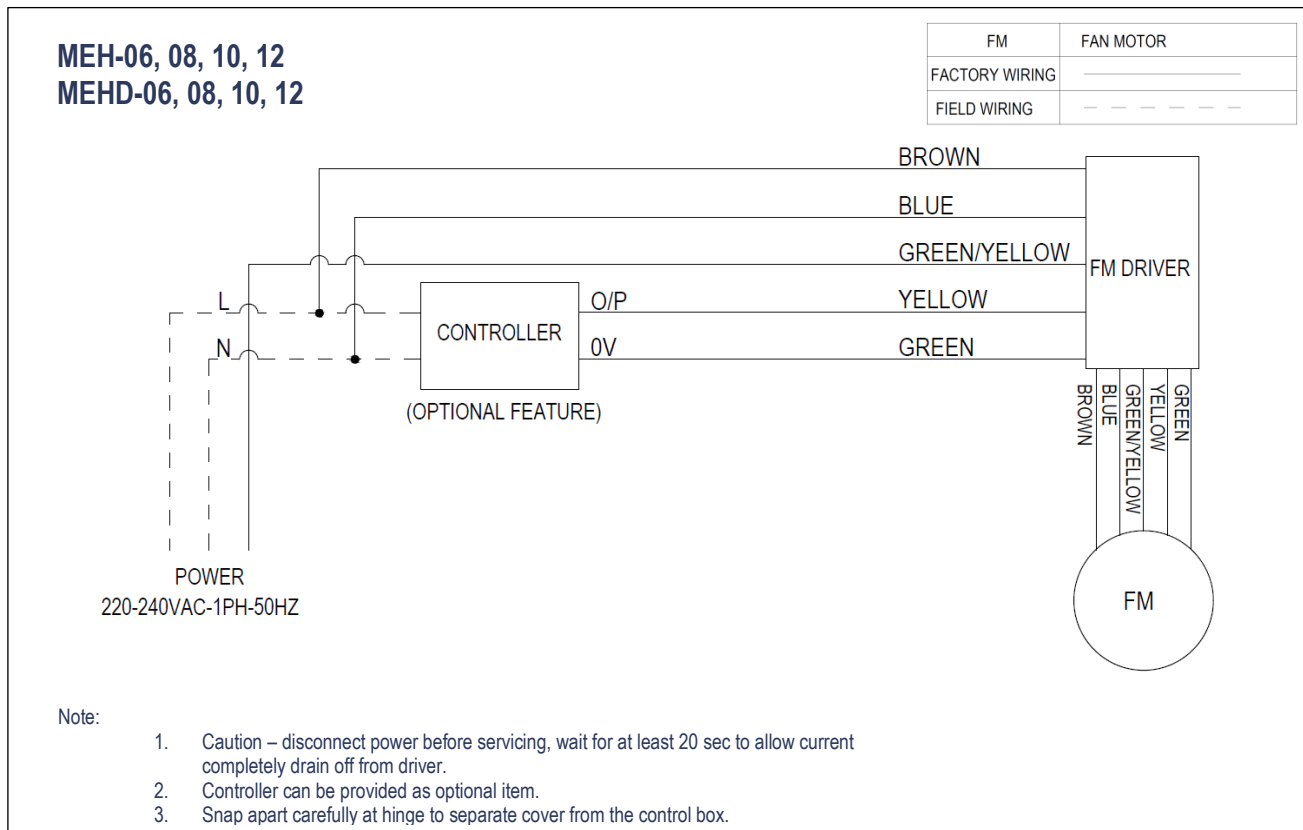


WIRING DIAGRAM

42MEH/MEHD SERIES HIGH STATIC DUCTED, DOUBLE SKIN DUCTED & DECORATIVE FCUs WITH PLENUM SINGLE MOTOR WIRING DIAGRAM (EC MOTOR) – WITHOUT CONTROLLER (FIELD SCOPE)

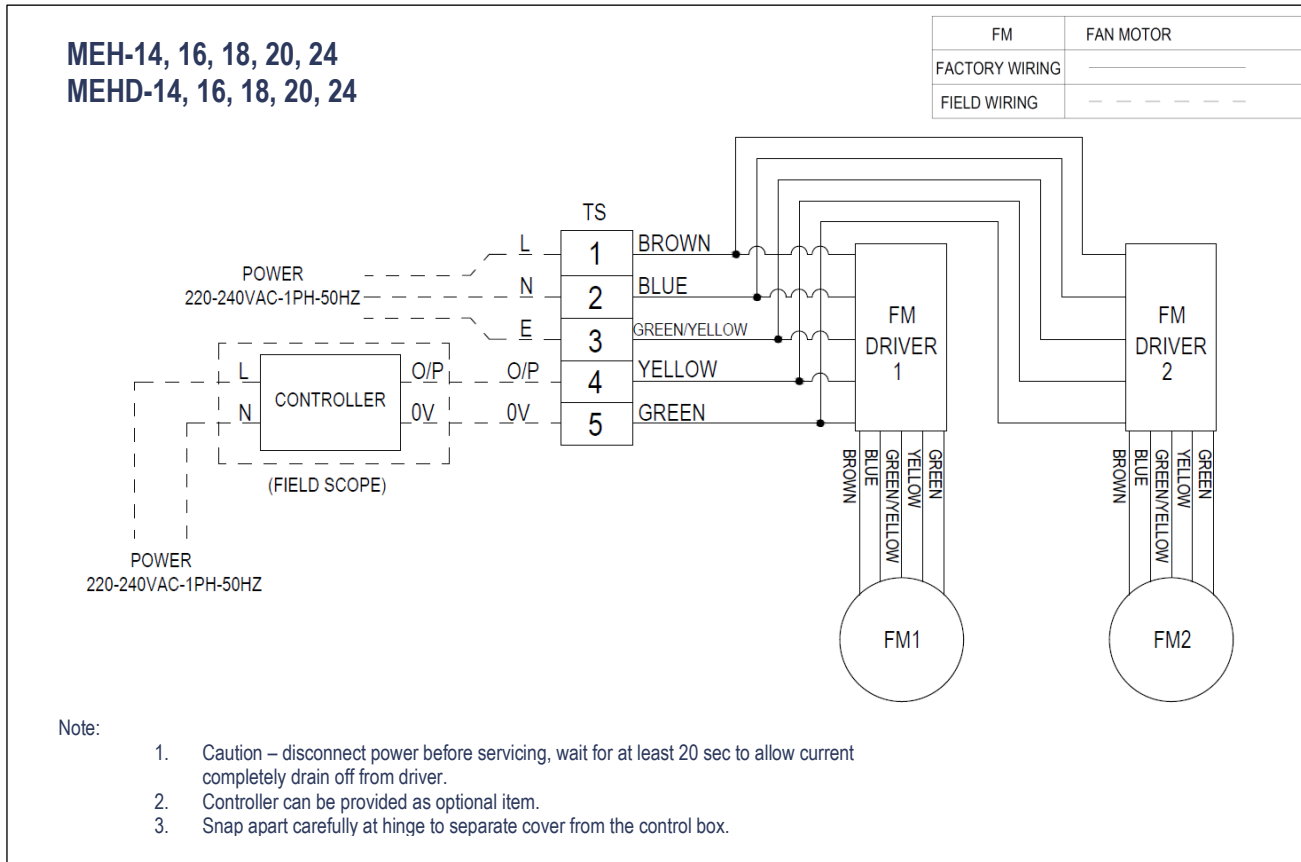


SINGLE MOTOR WIRING DIAGRAM (EC MOTOR) – WITH CONTROLLER (FACTORY ASSEMBLED)

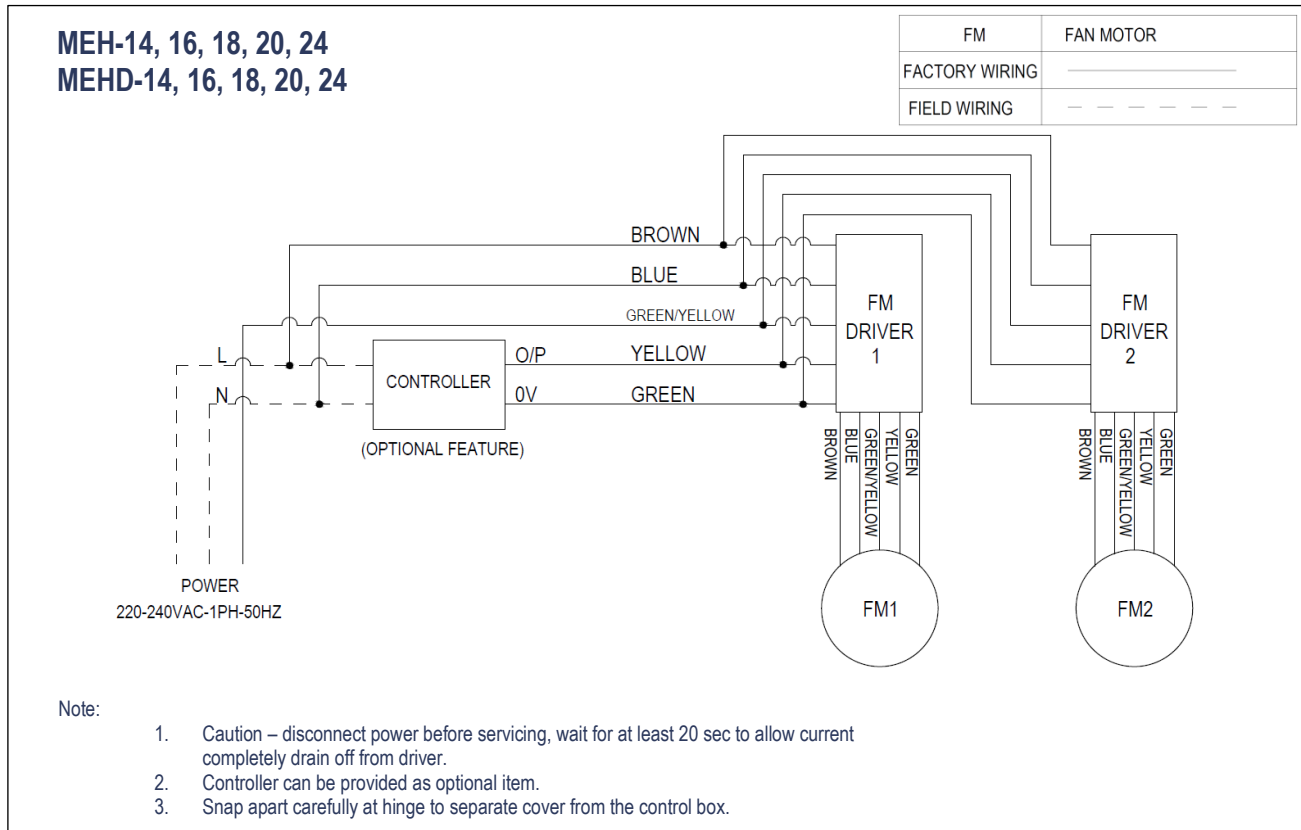


WIRING DIAGRAM

42MEH/MEHD SERIES HIGH STATIC DUCTED, DOUBLE SKIN DUCTED & DECORATIVE FCUs WITH PLENUM DOUBLE MOTOR WIRING DIAGRAM (EC MOTOR) – WITHOUT CONTROLLER (FIELD SCOPE)

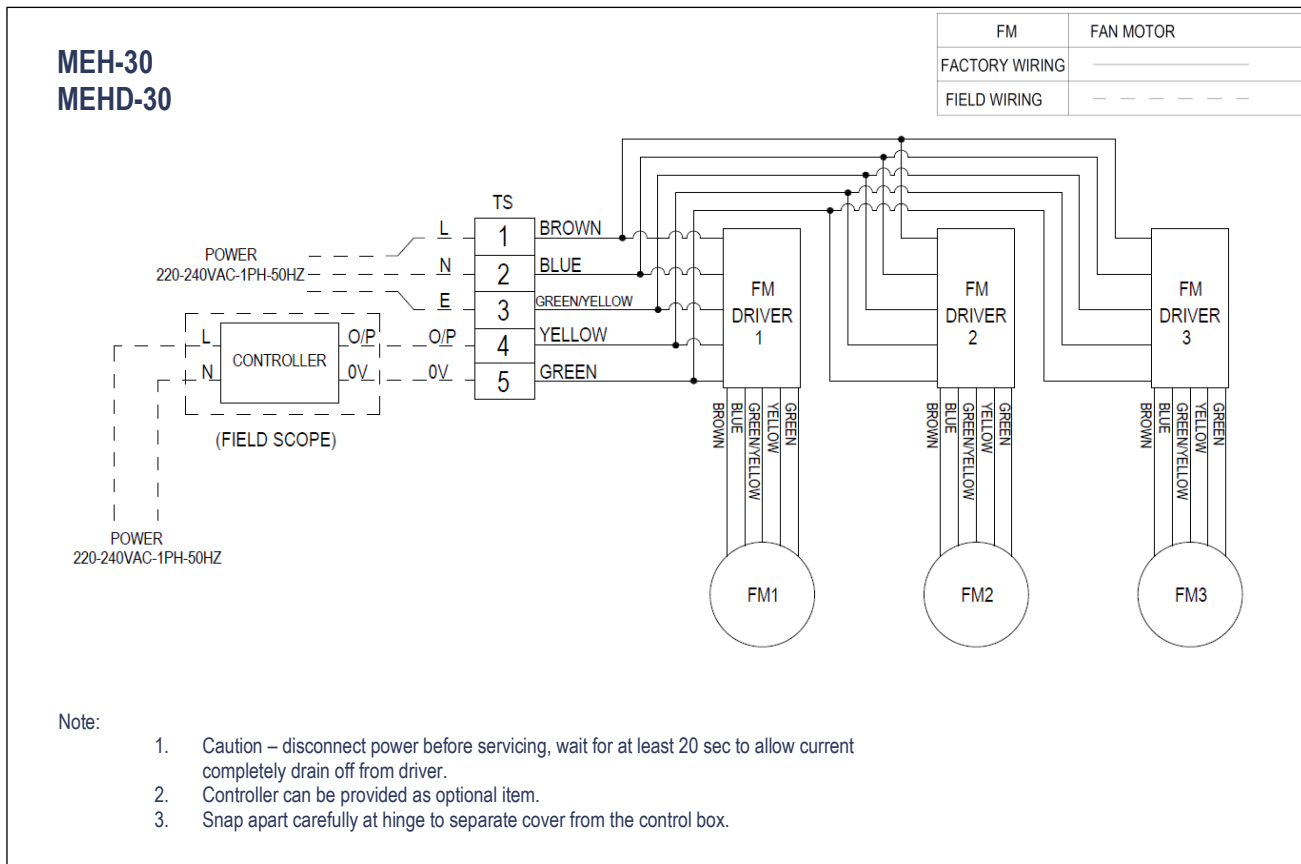


DOUBLE MOTOR WIRING DIAGRAM (EC MOTOR) – WITH CONTROLLER (FACTORY ASSEMBLED)

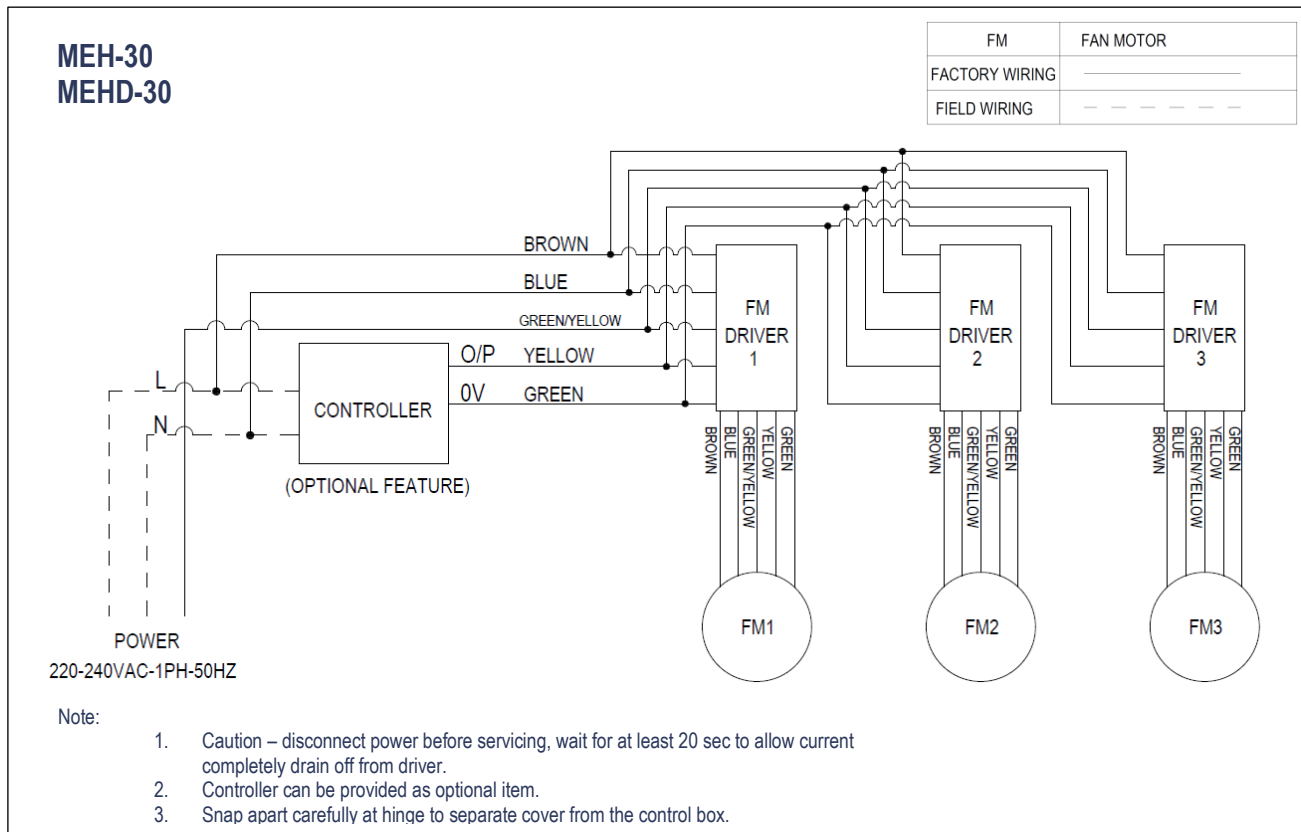


WIRING DIAGRAM

42MEH/ MEHD SERIES HIGH STATIC DUCTED, DOUBLE SKIN DUCTED & DECORATIVE FCUs WITH PLENUM TRIPLE MOTOR WIRING DIAGRAM (EC MOTOR) – WITHOUT CONTROLLER (FIELD SCOPE)



TRIPLE MOTOR WIRING DIAGRAM (EC MOTOR) – WITH CONTROLLER (FACTORY ASSEMBLED)



GUIDE SPECIFICATIONS

FCU GUIDE SPECIFICATIONS

Size Range: 200 to 3000 cfm

PART 1 – GENERAL

1.1 System Description

Horizontal, room fan coil units are to be installed above ceiling for ducting, or with cabinet for exposed Ceiling installations.

1.2 Quality Assurance

- A. Carrier fan coil units are tested in accordance with Eurovent standard.(Refer page no. 4 for Eurovent website link).
- B. Standard insulations are with DCL (Dubai Central Laboratory) conformity mark and complying with BS476 part 6&7 and fire performance tested as per ASTM E84 standards.
- C. Standard fan coil unit is completely insulated in fan section as well as coil section.
- D. Unit cabinet shall be with G90 galvanized steel sheet (0.275 kg of zinc per sq. metre) complying with JIS-G3302 and ASTM A653
- E. Each coil is factory tested for leakage at 350 psig nitrogen pressure with coil submerged in water.
- F. Factory shall be ISO-9001&18001 certified.

1.3 Delivery , Storage and Handling

Each unit is individually packaged from point of manufacture. Units shall be handled and stored in accordance with the manufacturer's instructions.

PART 2 – PRODUCT

2.1 General

Factory assembled, horizontal, blow-through type fan coil unit for exposed ceiling or ducted installations. Units are complete with water coil, fan(s), motor(s), drain pan, filters and all required wiring, collars for ducted units (on the supply side only). Carrier standard fan coil unit casing is manufactured from heavy gauge G90 galvanized steel sheet. Standards unit's inner surfaces for the cooling coil section and entire return air plenum section are insulated with 6mm thick NBR (Nitrile Butadiene Rubber) Electrometric closed cell Foam insulation, 50kg/m³ density. The drain pan is

polyester powder coated on both sides & insulated outside with 3mm thick NBR insulation. Standard insulation is highly flexible, closed cell insulation material with high water vapor diffusion resistance and low thermal conductivity.

2.2 MEL / MELD–Low Static Ducted Units & MEH / MEHD–High Static Ducted Units

Carrier standard low static ducted units are with factory installed plenum section and cleanable aluminum mesh filter. Units are equipped with removable panels to access the fan motor assemblies easily. Standards ducted unit's inner surfaces for the cooling coil section and entire return air plenum section are insulated with NBR Elastomeric closed cell Foam insulation, 50kg/m³ density and drain pan is polyester powder coated on both sides & insulated outside.

2.3 MEL / MELD–Decorative Units & MEH / MEHD–Decorative Units

Carrier standard decorative units are with factory installed plenum section and cleanable aluminum mesh filter. Units are equipped with removable panels to access the fan motor assemblies easily. Standard decorative exposed unit's inner surfaces for the cooling coil section and entire return air cabinet section are insulated with NBR Elastomeric closed cell Foam insulation, 50kg/m³ density and drain pan is polyester powder coated on both sides & insulated outside. Standard decorative exposed units are with removable type double deflection supply air grill, complete unit (RAL9002) and grill (RAL9016) is polyester powder coated.

2.4 MEL / MELD–Low Static Double Skin Ducted Units & MEH / MEHD–Low Static Double Skin Ducted Units

Carrier standard low static double skin ducted units are with factory installed plenum section and cleanable aluminum mesh filter. Units are equipped with removable panels to access the fan motor assemblies easily. Standards double skin unit's cooling coil section and entire return air plenum section are insulated with NBR Elastomeric closed cell Foam insulation, 50kg/m³ density and drain pan is polyester powder coated on both sides & insulated outside. Unit Insulations are stacked between inner & outer galvanized steel panels.

2.5 Fan

Standard units are with direct driven double width fan wheels with forward curved blades are statically and dynamically balanced. Fan scrolls and wheels are constructed of galvanized steel.

2.6 Coils

Standard FCUs are equipped with a 4-row coil for installation in a 2 pipe system. All coils are with 9.52mm seamless copper tubes and aluminum fins. Coil fins are mechanically bonded to copper pipes. Each coil shall have a manual air vent (for ducted units only) and threaded connections for easy field piping. All coils are tested with Nitrogen (N2) pressure at 350psi (2413 kpa) submerged in water and working pressure is 250psi (1724 kpa)

2.7 Operating Characteristics

Fan coil units installed in a 2-pipe system shall be capable of providing cooling as determined by the operating mode of the central water supply system.

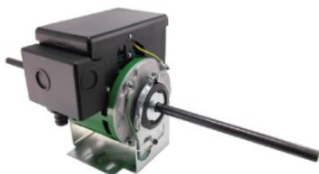
2.8 Electrical Requirements

Standard unit are operates on 220/240V, single phase, 50Hz electric power. All internal wirings are done in flexible conduit.

2.9 Motor (s)

Fan motors are 3-speed, 220/240V, and single phase, 50Hz, Class B, Permanent Split Capacitor, & Lubricated Ball Bearing.

The fan motor(s) shall be equipped with integral Automatic temperature reset for motor protection.



Controller
(Optional)

Electronically Commutated Motor (ECM) is available for all sizes as Optional feature.

2.10 Filter

The filters are factory installed aluminum mesh type, permanent, washable and 25 mm thick G2 class as standard. Filter is provided with lifting latches on both the sides of filter frame for easy access from rear side as standard. (Lift and pull)

Arrestance or Dust Spot Efficiency	US ASHRAE 52.2	European Union EN779 Class	
AFI 65% - 70%	MERV 2	G2	65% ≤ Am ≤ 80%



Manufacturer reserves the right to discontinue, or change at any time, specifications or designs without notice and without incurring obligations.
42ME-E19-1PD